

Biologie I

Strom	Jan	Feb	Mrz	Apr	Mai	Jun	Jul	Aug	Sep	Okt	Nov	Dez
	kWh	kWh	kWh	kWh	kWh	kWh	kWh	kWh	kWh	kWh	kWh	kWh
2003	155.562	127.245	131.678	133.709	142.386	150.710	161.084	162.920	125.167	149.400	130.883	161.886
2004	111.002	130.523	138.615	143.364	132.366	196.430	104.335	137.511	135.381	137.682	126.530	134.736
2005	119.383	125.912	134.419	133.650	127.142	138.468	140.085	122.942	124.460	141.207	120.319	138.428
2006	125.747	121.419	129.966	129.294	131.490	153.900	153.882	133.218	137.578	141.377	141.863	132.484
2007	142.490	120.041	135.764	114.026	135.146	136.906	132.983	123.564	123.446	114.337	124.531	125.194
2008	115.755	118.285	116.859	112.336	115.425	118.911	120.246	115.563	107.038	113.899	121.165	114.737
2009	114.824	106.296	113.538	107.167	120.544	107.951	119.855	119.759	117.744	115.537	106.592	105.107
2010	102.883	98.897	108.587	109.286	101.765	112.138	126.991	106.865	105.727	110.613	106.783	100.302
2011	99.037	93.468	102.473	104.063	108.411	109.715	114.646	114.871	101.712	105.235	106.128	99.627
2012	99.613	86.089	92.318	101.336	99.850	103.246	102.194	101.263	97.872	98.882	86.294	92.294
2013	89.074	81.730	88.492	85.571	82.365	96.111	100.492	99.986	88.832	93.519	95.465	89.247
2014	85.919	85.277	90.901	79.900	95.185	92.872	100.103	91.700	91.404	90.077	93.930	93.446
2015	92.421	87.142	94.397	87.001	94.050	95.983	108.016	98.713	95.711	93.704	86.816	84.168
2016	91.516	86.278	89.440	82.565	97.265	91.578	94.151	95.273	91.099	96.159	97.840	97.101
2017	91.072	84.106	88.241	95.356	95.946	98.198	106.513	101.260	94.237	97.978	100.166	87.230
Mittelwert 2004-2013	111.981	108.266	116.103	114.009	115.450	127.378	121.571	117.514	113.979	117.229	113.567	113.216
Mittelwert 2005-2014	109.473	103.741	111.332	107.663	111.732	117.022	121.148	112.933	109.581	112.468	110.307	109.087
Mittelwert 2006-2015	106.776	99.864	107.330	102.998	108.423	112.773	117.941	110.510	106.706	107.718	106.957	103.661
Mittelwert 2007-2016	103.353	96.350	103.277	98.325	105.001	106.541	111.968	106.716	102.059	103.196	102.554	100.122

Gesamt	1. Halbjahr	2. Halbjahr	Summe
kWh	kWh	kWh	
1.732.630	841.290	891.340	1.732.630
1.628.475	852.300	776.175	1.628.475
1.566.415	778.974	787.441	1.566.415
1.632.218	1.499.734	840.402	2.340.136
1.528.428	784.373	744.055	1.528.428
1.389.819	697.571	692.248	1.389.819
1.354.914	670.320	684.594	1.354.914
1.290.837	633.556	657.281	1.290.837
1.259.386	617.167	642.219	1.259.386
1.161.251	582.452	578.799	1.161.251
1.090.884	523.343	567.541	1.090.884
1.090.714	530.054	560.660	1.090.714
1.118.122	550.994	567.128	1.118.122
1.110.265	538.642	571.623	1.110.265
1.140.303	552.919	587.384	1.140.303

1.390.263
1.336.487
1.291.657
1.239.462

Quelle: Rechnung

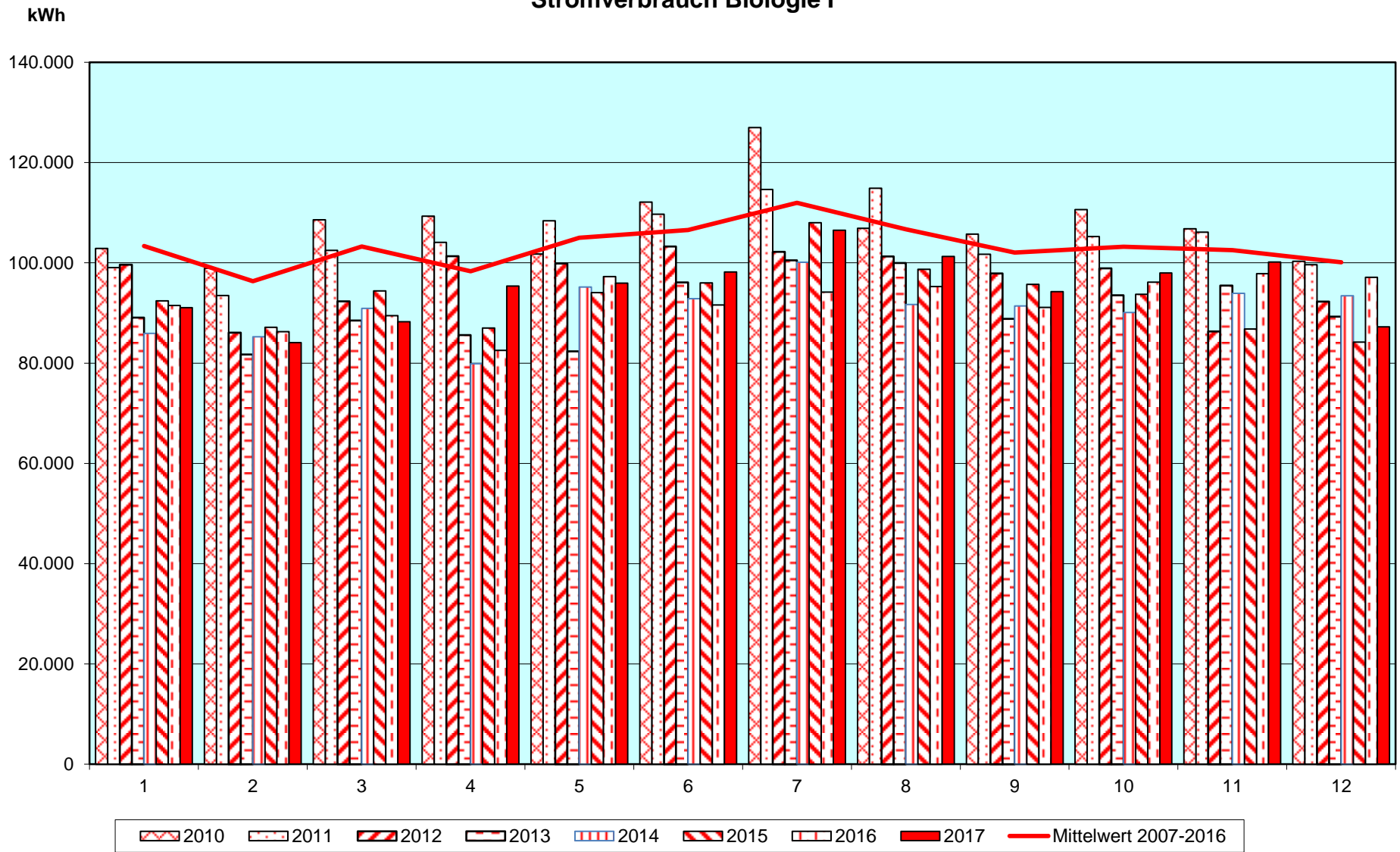
Fernwärme	Jan	Feb	Mrz	Apr	Mai	Jun	Jul	Aug	Sep	Okt	Nov	Dez
	to	to	to	to	to	to	to	to	to	to	to	to
2003	391,0	390,0	208,0	177,0	95,0	67,0	58,0	36,0	85,0	204,0	234,0	262,0
2004	397,6	248,4	316,0	175,0	125,0	96,0	81,0	67,0	96,0	122,0	232,0	297,0
2005	241,0	342,0	308,0	157,0	103,0	50,0	35,0	49,0	55,0	139,0	296,0	299,0
2006	374,0	291,0	320,0	143,0	97,0	81,4	45,2	88,6	79,4	131,8	241,8	298,6
2007 GTZ	392,7	281,1	261,6	132,7	138,5	25,3	45,2	7,7	394,4	291,0	297,5	235,5
2007 GTZ	284,0	213,4	209,8	116,0	98,0	73,0	66,0	59,0	87,0	134,0	258,0	167,0
2007 GTZ	383,0	278,3	198,4	107,0	128,4	34,9	19,7	8,8	33,3	107,8	215,9	151,2
2008	292,0	205,0	180,0	137,0	80,0	64,0	49,0	46,0	91,0	102,0	175,0	222,0
2008 GTZ	322,6	229,0	155,7	95,2	157,2	22,1	84,3	29,4	27,8	84,2	162,1	210,7
2009	255,0	200,0	182,0	78,0	71,0	58,0	52,0	44,0	67,0	133,0	129,0	225,0
2009 GTZ	199,4	195,7	152,6	78,8	135,8	21,5	83,5	28,1	49,5	105,0	156,7	231,4
2010	235,0	203,0	189,0	125,0	104,0	63,0	61,0	62,0	96,0	139,0	190,0	283,0
2010 GTZ	192,0	210,6	143,3	108,6	96,4	24,5	39,9	7,5	33,3	98,3	179,8	240,6
2011	195,0	186,0	170,0	73,0	81,0	65,0	79,0	62,0	85,0	138,0	177,0	187,0
2011 GTZ	195,6	207,5	166,2	84,9	113,7	29,5	26,2	22,0	97,1	119,2	163,0	230,4
2012	271,0	187,0	150,0	117,0	51,0	58,0	54,0	58,0	65,0	120,0	151,0	191,0
2012 GTZ	287,7	148,7	158,2	91,0	62,5	42,5	88,2	22,5	25,0	103,6	136,1	235,4
2013	174,0	211,0	204,0	114,0	94,0	52,0	41,0	62,0	78,0	82,0	169,0	223,0
2013 GTZ	166	207	193	103	75	48	36	42	65	0	196	205
2013	167,5	190,9	148,2	95,4	48,0	48,0	41,0	42,7	97,4	154,4	228,6	292,6
2014	146,0	155,0	136,0	82,0	96,0	61,0	54,0	68,0	69,0	79,0	154,0	211,0
2014 GTZ	190,9	246,4	147,8	92,4	37,6	34,5	41,0	62,0	29,7	136,4	165,2	260,4
2015	188,0	203,0	152,0	110,0	65,0	57,0	68,0	55,0	74,0	137,0	121,0	123,0
2015 GTZ	196,7	239,3	134,7	76,3	43,6	28,3	41,0	62,0	12,7	106,1	202,2	363,5
2016	208,0	171,0	177,0	100,0	80,0	61,0	41,0	44,0	88,0	105,0	216,0	268,0
2016 GTZ	0,0	0,0	0,0	0,0	0,0	0,0	0,0	0,0	0,0	0,0	0,0	0,0
2017	225,0	216,0	136,0	102,0	81,0	74,0	56,0	66,0	82,0	144,0	192,0	0
2017 GTZ	0,0	0,0	0,0	0,0	0,0	0,0	0,0	0,0	0,0	0,0	0,0	0,0
Mittelwert 2004-2013	272	229	223	124	90	66	57	60	80	124	201	239
Mittelwert 2005-2014	247	219	205	114	88	63	54	60	77	120	193	231
Mittelwert 2006-2015	241	205	189	110	84	63	57	60	79	120	175	213
Mittelwert 2007-2016	225	193	175	105	82	61	57	56	80	117	173	210

Durchschnittswert Grundverbrauch 60

Gesamt	1. Halbjahr	2. Halbjahr	Summe
to	to	to	to
2.207	1.328	879	2.207
2.253	1.358	895	2.253
2.074	1.201	873	2.074
2.192	1.306	885	2.192
1.767	994	773	1.767
1.685	958	727	1.685
1.643	958	685	1.643
1.589	844	649	1.589
1.493	844	649	1.493
1.437	784	653	1.437
1.740	919	821	1.740
1.495	751	744	1.495
1.498	770	728	1.498
1.455	797	658	1.455
1.473	834	639	1.473
1.404	814	590	1.404
1.504	849	655	1.504
1.292	665	626	1.292
1.311	676	635	1.311
1.443	748	695	1.443
1.365	775	578	1.365
1.508	721	787	1.508
1.559	797	762	1.559
1.374	834	540	1.374
0	0	0	0
1.764	1.003	760	1.764
1.670	935	734	1.670
1.597	935	662	1.597
1.534	935	600	1.534

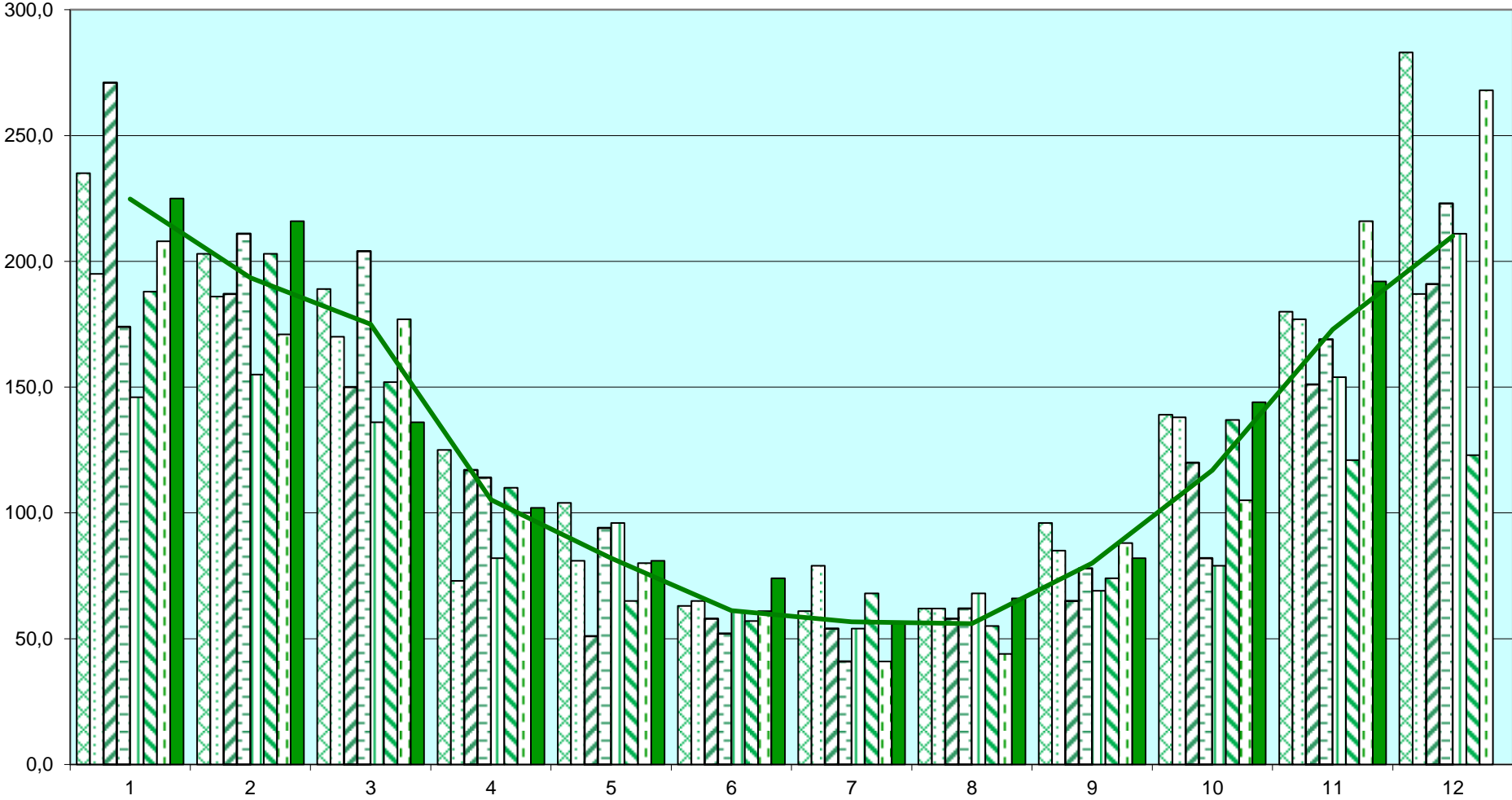
Wasser	Jan	Feb	Mrz	Apr	Mai	Jun	Jul	Aug	Sep	Okt	Nov	Dez
	m³	m³	m³	m³	m³	m³	m³	m³	m³	m³	m³	m³
2003	1.623	1.623			1.848			2.086			1.586	
2004	1.800				1.717			1.603			1.408	
2005	1.528				1.511			1.294			1.091	
2006	1.122				1.253			1.502			1.213	
Verbrauch 06							650	483	369	416	428	369
2007	503	442	491	572	808	453	629	646	640	398	424	387
Verbrauch 07		1.436			1.833			1.915			1.209	
Verbrauch 2008	430	376	442	481	327	543	550	505	404	404	474	387
Verbrauch im Quartal 08		1.248			1.351			1.459			1.265	
Verbrauch 2009	404	441	463	425	463	524	596	578	527	608	762	387
Verbrauch im Quartal 09		1.308			1.412			1.701			1.757	
Verbrauch 2010	463	443	449	440	358	462	530	413	425	443	431	387
2010		1.355			1.260			1.368			1.261	
Verbrauch 2011	449	381	426	439	406	384	360	357	352	386	376	387
2011		1.256			1.229			1.069			1.149	
Verbrauch 2012	400	370	358	419	406	432	464	489	438	362	365	310
2012		1.128			1.257			1.391			1.037	
Verbrauch 2013	495	426	353	377	349	442	547	459	369	388	371	299
2013		1.274			1.168			1.375			1.058	
2014	369	321	382	278	357	373	417	373	372	359	357	331
		1.072			1.008			1.162			1.047	
2												

Stromverbrauch Biologie I



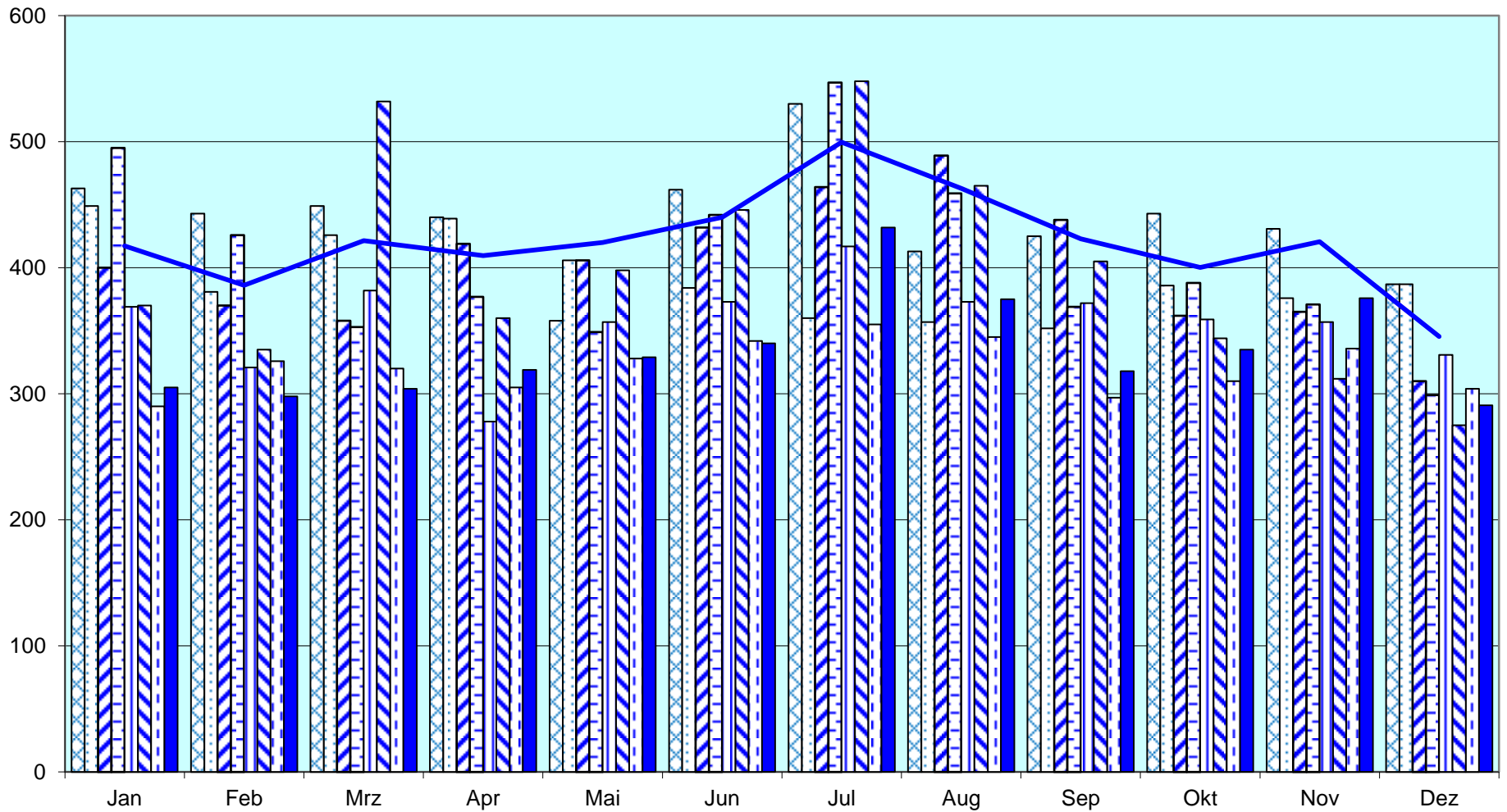
Fernwärme Biologie I

to



Trinkwasserverbrauch Biologie I

m³



2010 2011 2012 2013 2014 2015 2016 2017 Mittelwert 2007-2016