

**Biologie II**

**Strom**

	Jan	Feb	Mrz	Apr	Mai	Jun	Jul	Aug	Sep	Okt	Nov	Dez
	kWh	kWh	kWh	kWh	kWh	kWh	kWh	kWh	kWh	kWh	kWh	kWh
2003												
2004												
2005												
2006												
2007	465.835	410.180	475.840	427.335	501.540	492.070	465.060	492.535	429.435	502.850	410.400	436.650
2008												
2009												
2010	326.515	370.875	373.565	387.650	448.970	400.670	387.060	423.945	367.605	381.395	464.770	382.460
2011	352.910	364.040	382.160	392.595	394.060	438.150	389.170	498.950	391.790	440.625	393.690	422.380
2012	429.790	387.325	388.115	422.590	408.610	399.615	469.485	446.665	374.220	442.400	388.300	359.025
2013	403.792	367.227	406.418	406.935	409.582	402.280	434.809	417.855	395.106	423.610	403.606	408.780
2014	414.494	372.900	401.364	387.730	414.234	400.235	430.038	403.673	388.203	409.873	402.042	402.225
2015	395.588	358.487	389.859	376.530	390.333	394.716	440.194	419.552	377.572	390.919	383.230	386.973
2016	383.898	370.701	393.889	390.063	411.067	421.324	429.936	408.662	385.396	399.978	386.973	381.766
2017	371.868	357.664	376.100	325.953	409.984	408.730	433.610	425.046	379.534	398.235	393.645	394.002

Gesamt	1. Halbjahr	2. Halbjahr	Summe
kWh	kWh	kWh	
0	0	0	0
0	0	0	0
0	0	0	0
0	0	0	0
5.509.730	2.772.800	2.736.930	5.509.730
0	0	0	0
0	0	0	0
4.715.480	2.308.245	2.407.235	4.715.480
4.860.520	2.323.915	2.536.605	4.860.520
4.916.140	2.436.045	2.480.095	4.916.140
4.880.000	2.396.234	2.483.766	4.880.000
4.827.011	2.390.957	2.436.054	4.827.011
4.703.953	2.305.513	2.398.440	4.703.953
4.763.653	2.370.942	2.392.711	4.763.653
4.674.371	2.250.299	2.424.072	4.674.371

<b>Mittelwert 2004 - 2013</b>	395.768	379.929	405.220	407.421	432.552	426.557	429.117	455.990	391.631	438.176	412.153	401.859
<b>Mittelwert 2005 - 2014</b>	398.889	378.758	404.577	404.139	429.499	422.170	429.270	447.271	391.060	433.459	410.468	401.920
<b>Mittelwert 2006 - 2015</b>	398.418	375.862	402.474	400.195	423.904	418.248	430.831	443.311	389.133	427.382	406.577	399.785
<b>Mittelwert 2007 - 2016</b>	396.603	375.217	401.401	398.929	422.300	418.633	430.719	438.980	388.666	423.956	404.126	397.532

4.976.374	2.447.448	2.528.926	4.976.374
4.951.480	2.438.033	2.513.448	4.951.480
4.916.119	2.419.101	2.497.018	4.916.119
4.897.061	2.413.081	2.483.980	4.897.061

**Wärme**

	Jan	Feb	Mrz	Apr	Mai	Jun	Jul	Aug	Sep	Okt	Nov	Dez
	m³	m³	m³	m³	m³	m³	m³	m³	m³	m³	m³	m³
2003												
2004												
2005												
2006												
2007	756,2	681,4	600,4	396,0	173,0	418,0	368,0	315,0	314,0	420,0	880,0	648,0
2008	1.180,0	797,0	767,0	505,0	355,0	279,0	344,0	275,0	442,0	457,0	680,0	1.129,0
2009	628,0	718,0	606,0	383,0	312,0	311,0	268,0	320,0	306,0	468,0	392,0	734,0
2010	783,0	642,0	521,0	462,0	458,0	284,0	433,0	299,0	284,0	423,0	569,0	830,0
2011	781,6	656,6	559,0	258,2	352,0	325,0	329,0	336,0	370,0	429,8	604,8	683,4
2012	1.034,8	508,8	476,6	452,2	261,3	307,2	186,6	201,6	301,4	523,1	539,2	693,2
2013	593,5	755,8	718,9	458,5	358,9	291,6	317,2	468,6	362,7	322,9	611,2	717,0
2014	576,6	569,9	530,4	338,6	431,5	371,8	370,6	359,8	369,0	388,6	552,8	769,4
2015	628,6	665,3	554,2	439,8	306,7	332,6	484,6	373,2	322,9	482,1	405,3	
2016	525,9	630,1	668,5	415,3	314,3	388,8	359,0	343,6	571,3	335,0	743,7	882,4
2017	765,9	684,0	440,8	322,9	333,5	458,6	422,6	417,6	235,3	621,2	549,4	

Gesamt	1. Halbjahr	2. Halbjahr	Summe
m³	m³	m³	m³
0	0	0	0
0	0	0	0
0	0	0	0
0	0	0	0
5.970	3.025	2.945	5.970
7.210	3.883	3.327	7.210
5.446	2.958	2.488	5.446
5.988	3.150	2.838	5.988
5.685	2.932	2.753	5.685
5.486	3.041	2.445	5.486
5.977	3.177	2.800	5.977
5.629	2.819	2.810	5.629
4.995	2.927	2.068	4.995
6.178	2.943	3.235	6.178
5.252	3.006	2.246	5.252

Quelle: Rechnung

<b>Mittelwert 2004 - 2013</b>	822	680	607	416	324	317	321	316	340	435	611	776
<b>Mittelwert 2005 - 2014</b>	792	666	597	407	338	323	327	322	344	429	604	776
<b>Mittelwert 2006 - 2015</b>	774	666	593	410	334	324	345	328	341	435	582	776
<b>Mittelwert 2007 - 2016</b>	749	662	600	411	332	331	346	329	364	425	598	787

5.966	3.167	2.799	5.966
5.924	3.123	2.801	5.924
5.907	3.101	2.805	5.907
5.935	3.086	2.850	5.935

**Wasser**

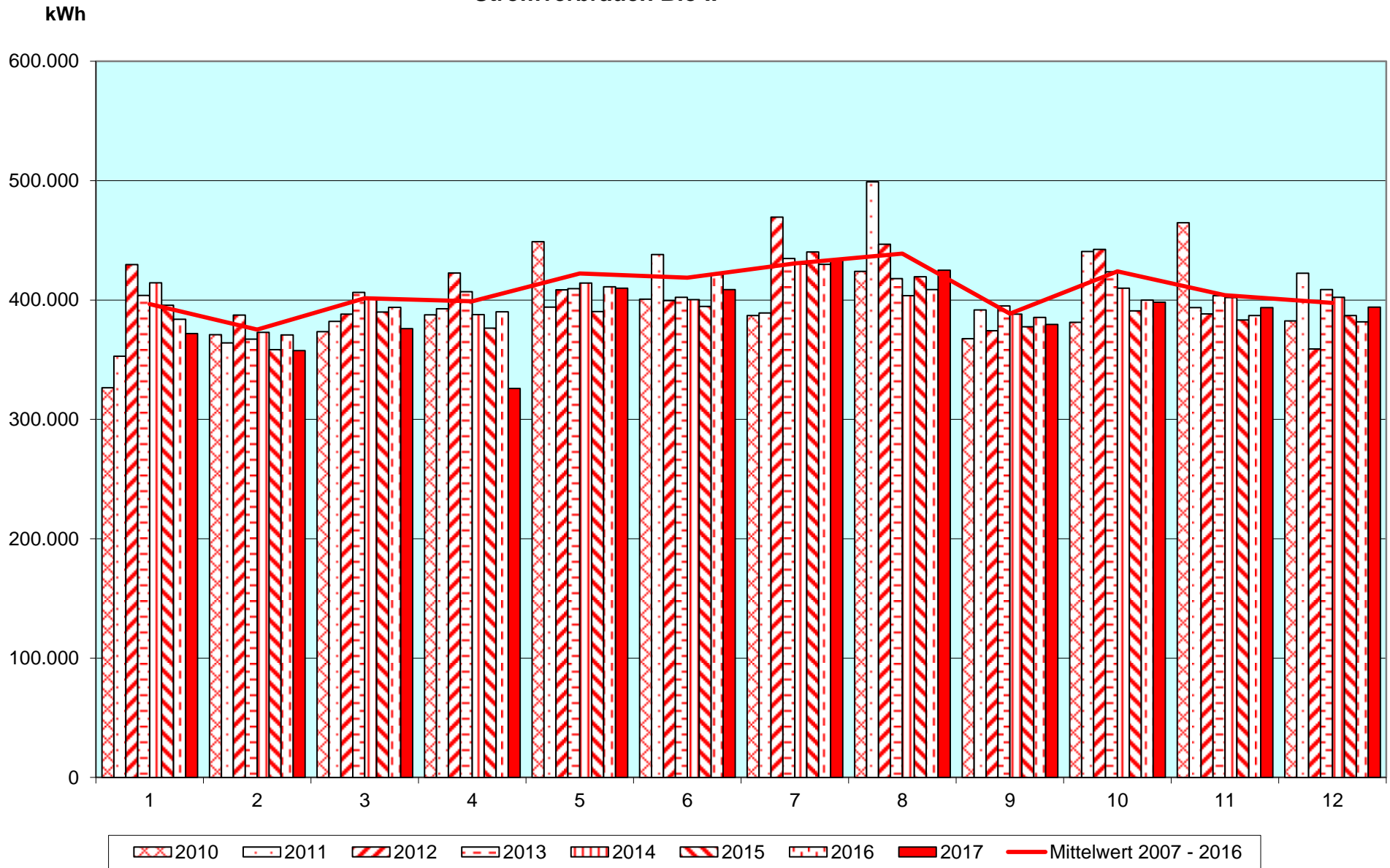
	Jan	Feb	Mrz	Apr	Mai	Jun	Jul	Aug	Sep	Okt	Nov	Dez
	m³	m³	m³	m³	m³	m³	m³	m³	m³	m³	m³	m³
2003												
2004		2.896			2.989			3.677			3.185	
2005		3.105			3.802			3.343			3.418	
2006		2.853			3.970			4.496			2.258	
2007		2.312			2.750			3.415			2.244	
2008		2.000			2.571			2.778			1.961	
2009		1.931			2.082			2.990			2.857	
2010		2.792			2.701			3.247			2.026	
2011		1.808			2.433			2.747			1.970	
2012		1.790			2.130			2.131			1.472	
2013		1.120			827			1.492			1.190	
2014		876			1.110			3.408			1.757	
2015		2.039			2.615			3.895			2.055	
2016		2.198			2.496			3.139			2.011	
2017		2.270			3.656			3.781			2.792	

Gesamt	1. Halbjahr	2. Halbjahr	Summe
m³	m³	m³	m³
0	0	0	0
12.747	5.885	6.862	12.747
13.668	6.907	6.761	13.668
13.577	6.823	6.754	13.577
10.721	5.062	5.659	10.721
9.310	4.571	4.739	9.310
9.860	4.013	5.847	9.860
10.766	5.493	5.273	10.766
8.958	4.241	4.717	8.958
7.523	3.920	3.603	7.523
4.629	1.947	2.682	4.629
7.151	1.986	5.165	7.151
10.604	4.654	5.950	10.604
9.844	4.694	5.150	9.844
12.499	5.926	6.573	12.499

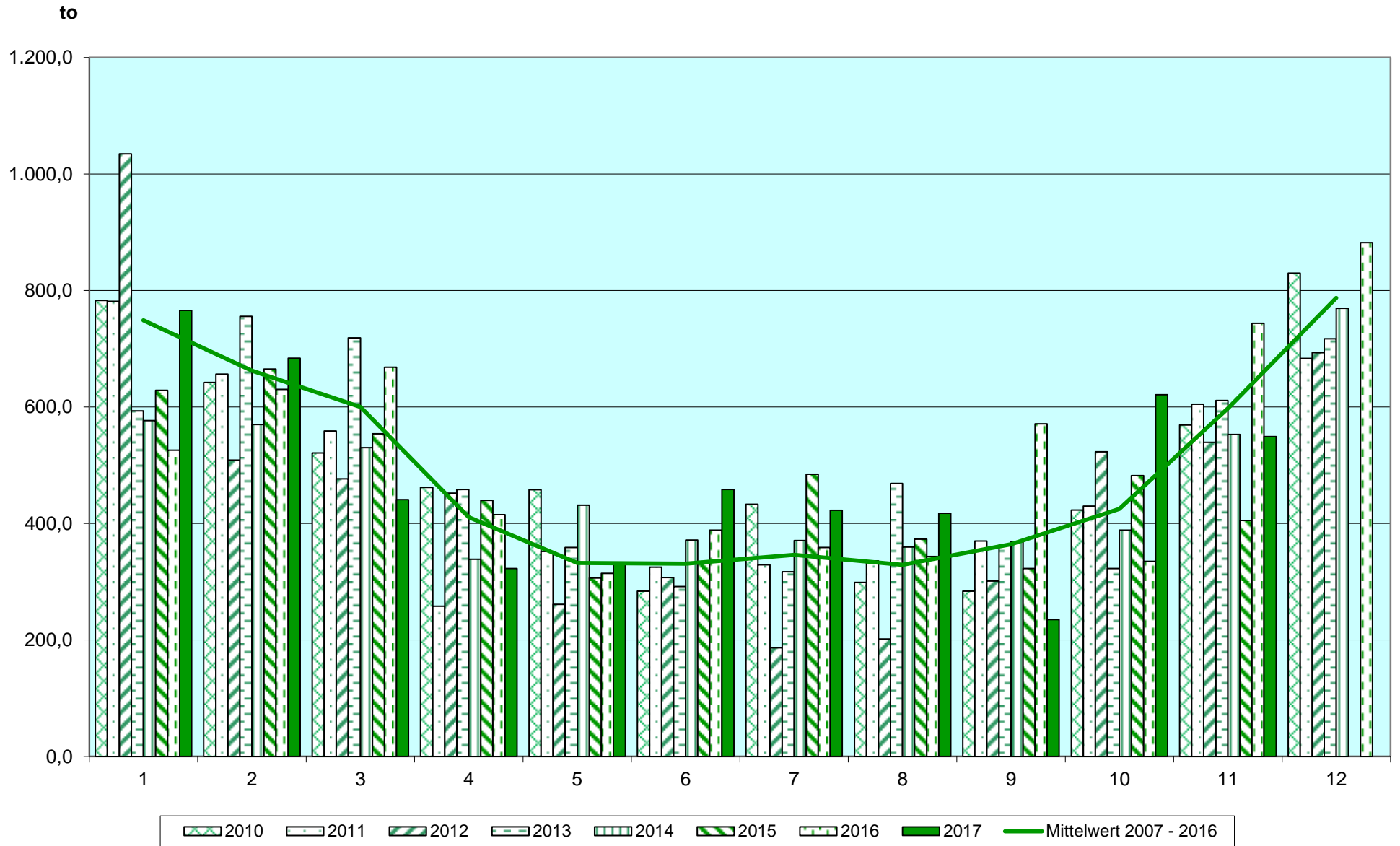
<b>Mittelwert 2004 - 2013</b>	2.261		2.626		3.032		2.258
<b>Mittelwert 2005 - 2014</b>	2.059		2.438		3.005		2.115
<b>Mittelwert 2006 - 2015</b>	1.952		2.319		3.060		1.979
<b>Mittelwert 2007 - 2016</b>	1.887		2.172		2.924		1.954
	1. Quartal		2. Quartal		3. Quartal		4. Quartal

10.176	4.886	5.290	10.176
9.616	4.496	5.120	9.616
9.310	4.271	5.039	9.310
8.937	4.058	4.879	8.937

# Stromverbrauch Bio II

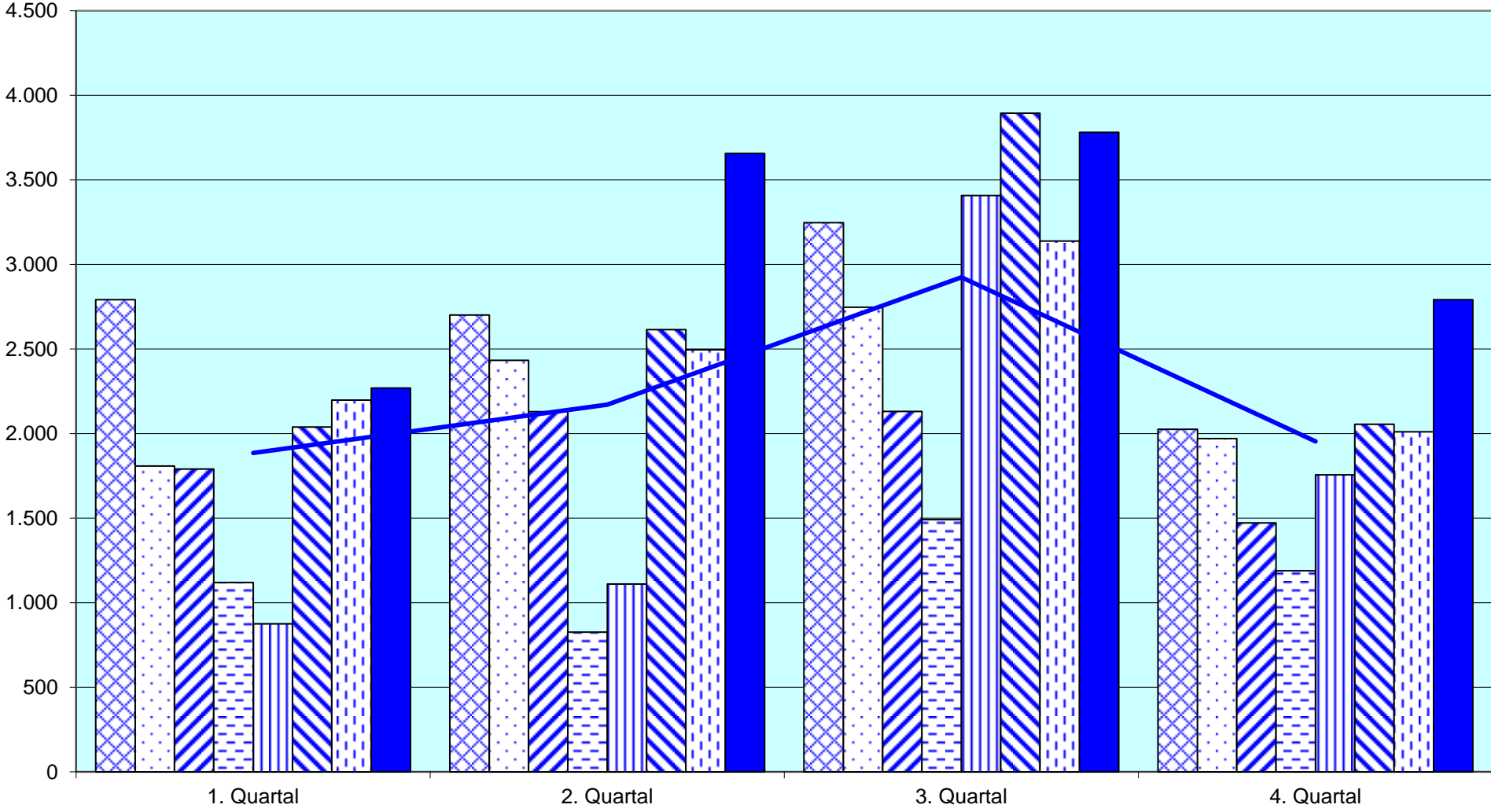


# Wärme Bio II



# Trinkwasserverbrauch Bio II

m<sup>3</sup>



2010 2011 2012 2013 2014 2015 2016 2017 Mittelwert 2007 - 2016