

Verbrauchsdaten

Gebäude 106

Forschungsgebäude

Strom	Jan	Feb	Mrz	Apr	Mai	Jun	Jul	Aug	Sep	Okt	Nov	Dez
	kWh	kWh	kWh	kWh	kWh	kWh	kWh	kWh	kWh	kWh	kWh	kWh
2003												
2004												
2005												
2006	9.008	8.518	8.777	7.975	8.696	8.292	8.836	9.004	8.775	9.481	10.139	10.085
2007	10.858	9.711	10.474	9.616	11.382	11.123	11.026	9.810	9.887	10.938	11.087	10.864
2008	10.946	10.015	10.327	10.078	10.074	10.443	10.772	10.480	10.078	10.230	10.050	10.874
2009	11.332	11.196	11.864	11.297	10.797	10.709	12.661	13.479	13.967	13.771	14.045	12.315
2010	11.829	11.473	12.115	11.014	13.380	14.177	13.435	12.883	11.209	12.400	12.411	11.867
2011	11.933	10.193	11.450	10.056	12.163	12.150	12.909	12.264	11.997	12.061	11.407	9.682
2012	10.406	10.681	10.198	9.886	12.113	12.345	10.671	8.953	10.303	11.243	11.820	10.693
2013	11.116	10.500	10.137	12.671	13.532	12.755	13.135	12.850	11.817	12.668	15.856	15.532
2014	11.608	10.547	11.153	10.863	11.197	9.555	10.035	9.584	9.016	7.267	8.093	10.500
2015	9.591	10.736	10.824	8.550	8.809	9.294	9.019	7.274	7.101	8.680	9.864	8.593
2016	8.372	7.835	7.730	7.335	7.078	7.234	6.917	6.651	6.523	6.810	8.593	6.328
2017	6.300	6.016	6.832	6.700	6.617	7.180	7.451	7.514	7.145	6.867	8.261	7.747

Mittelwert 2004 - 2013	10.929	10.286	10.668	10.324	11.517	11.499	11.681	11.215	11.004	11.599	12.102	11.489
Mittelwert 2005 - 2014	11.004	10.315	10.722	10.384	11.482	11.283	11.498	11.034	10.783	11.118	11.656	11.379
Mittelwert 2006 - 2015	10.863	10.357	10.732	10.201	11.214	11.084	11.250	10.658	10.415	10.874	11.477	11.101
Mittelwert 2007 - 2016	10.799	10.289	10.627	10.137	11.053	10.979	11.058	10.423	10.190	10.607	11.323	10.725

Wärme	Jan	Feb	Mrz	Apr	Mai	Jun	Jul	Aug	Sep	Okt	Nov	Dez
	kWh	kWh	kWh	kWh	kWh	kWh	kWh	kWh	kWh	kWh	kWh	kWh
2003												
2004												
2005												
2006	25.110	19.880	15.570	7.590	3.040	1.240	0	30	20	3.760	9.920	15.060
2007	15.500	12.190	11.020	3.380	2.200	310	10	20	2.050	7.700	16.640	21.510
2008	17.630	14.590	14.080	9.910	700	20	10	10	2.930	8.930	16.430	23.960
2009	28.300	20.350	16.100	5.050	1.310	60	20	0	1.000	9.000	10.500	19.060
2010	26.780	19.050	13.470	5.790	4.510	0	0	0	700	11.350	15.670	26.610
2011	21.700	17.140	11.420	3.360	1.350	0	0	0	0	7.460	15.390	18.890
2012	21.760	26.300	9.280	6.850	2.390	20	7	0	0	8.660	14.140	19.360
2013	23.940	25.200	10.350	8.890	5.510	640	0	0	0	8.060	16.250	18.850
2014	16.710	13.640	10.220	4.490	2.710	210	0	0	10	8.660	15.195	19.105
2015	21.028	16.500	12.220	7.100	2.580					9.040	12.050	13.140
2016	20.570,0	17.800,0	16.030,0	9.320,0	4.220,0	0,0	0,0	0,0	3.550,0	10.350,0	13.140,0	23.320,0
2017	29.410,0	15.880,0	10.400,0	7.610,0	0,0	0,0	0,0	20,0	3.100,0	6.850,0	17.880,0	21.090,0

Mittelwert 2004 - 2013	22.590	19.338	12.661	6.353	2.626	286	6	8	838	8.115	14.368	20.413
Mittelwert 2005 - 2014	21.937	18.704	12.390	6.146	2.636	278	5	7	746	8.176	14.459	20.267
Mittelwert 2006 - 2015	21.846	18.484	12.373	6.241	2.630	278	5	7	746	8.262	14.219	19.555
Mittelwert 2007 - 2016	21.392	18.276	12.419	6.414	2.748	140	5	3	1.138	8.921	14.541	20.381

Wasser	Jan	Feb	Mrz	Apr	Mai	Jun	Jul	Aug	Sep	Okt	Nov	Dez
	m³	m³	m³	m³	m³	m³	m³	m³	m³	m³	m³	m³
2003												
2004												
2005												
2006	33	25	32	16	21	20	23	19	32	21	24	29
2007	22	20	24	21	29	21	29	18	17	21	22	17
2008	23	22	18	31	20	25	44	19	25	31	23	16
2009	19	23	27	27	23	26	32	33	57	22	27	21
2010	21	22	24	20	21	22	24	19	22	30	27	22
2011	28	28	33	26	34	33	30	37	35	28	31	18
2012	22	24	25	20	26	27	29	19	18	24	24	18
2013	27	23	24	28	23	23	30	23	26	26	27	21
2014	28	23	23	22	26	25	27	23	23	24	25	19
2015	26	22	26	22	24					26	32	24
2016	33	26	29	25	30	37	28	25	26	25	24	21
2017	23	22	25	17	0	0	59	30	20	29	35	20

Mittelwert 2004 - 2013	24	23	26	23	25	25	30	23	29	25	26	20
Mittelwert 2005 - 2014	25	23	25	23	25	25	30	23	28	25	25	20
Mittelwert 2006 - 2015	25	23	25	23	25	25	30	23	28	25	26	20
Mittelwert 2007 - 2016	25	23	25	24	26	27	30	24	28	26	26	20

Gesamt kWh	1. Halbjahr kWh	2. Halbjahr kWh	Summe kWh
0	0	0	0
0	0	0	0
0	0	0	0
107.586	51.266	56.320	107.586
126.776	63.164	63.612	126.776
124.367	61.883	62.484	124.367
147.433	67.195	80.238	147.433
148.193	73.988	74.205	148.193
138.265	67.945	70.320	138.265
129.313	65.630	63.683	129.313
152.569	70.711	81.858	152.569
119.419	64.924	54.495	119.419
108.335	57.804	50.531	108.335
87.406	45.584	41.822	87.406
84.630	39.645	44.985	84.630

100%
118%
116%
137%
138%
129%
120%
142%
111%
101%
81%
79%

134.313	65.223	69.090	134.313
132.658	65.189	67.468	132.658
130.225	64.451	65.775	130.225
128.207	63.883	64.325	128.207

127.743
129.184

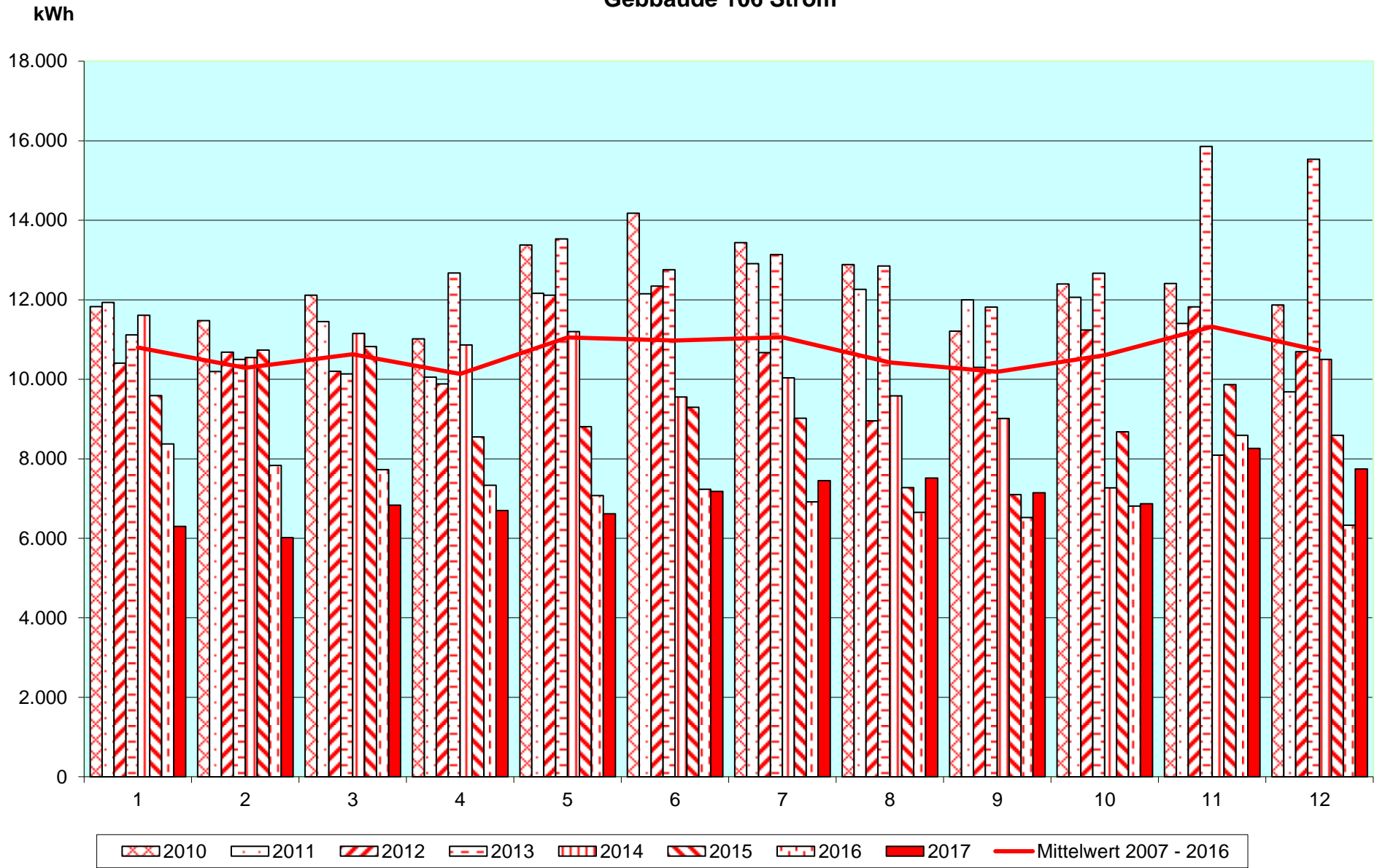
Gesamt kWh	1. Halbjahr kWh	2. Halbjahr kWh	Summe kWh
0	0	0	0
0	0	0	0
0	0	0	0
101.220	72.430	28.790	101.220
92.530	44.600	47.930	92.530
109.200	56.930	52.270	109.200
110.750	71.170	39.580	110.750
123.930	69.600	54.330	123.930
96.710	54.970	41.740	96.710
108.767	66.600	42.167	108.767
117.690	74.530	43.160	117.690
90.950	47.980	42.970	90.950
93.658	59.428	34.230	93.658
118.300	67.940	50.360	118.300
112.240	63.300	48.940	112.240

107.600	63.854	43.746	107.600
105.750	62.090	43.660	105.750
104.644	61.852	42.792	104.644
106.377	61.389	44.988	106.377

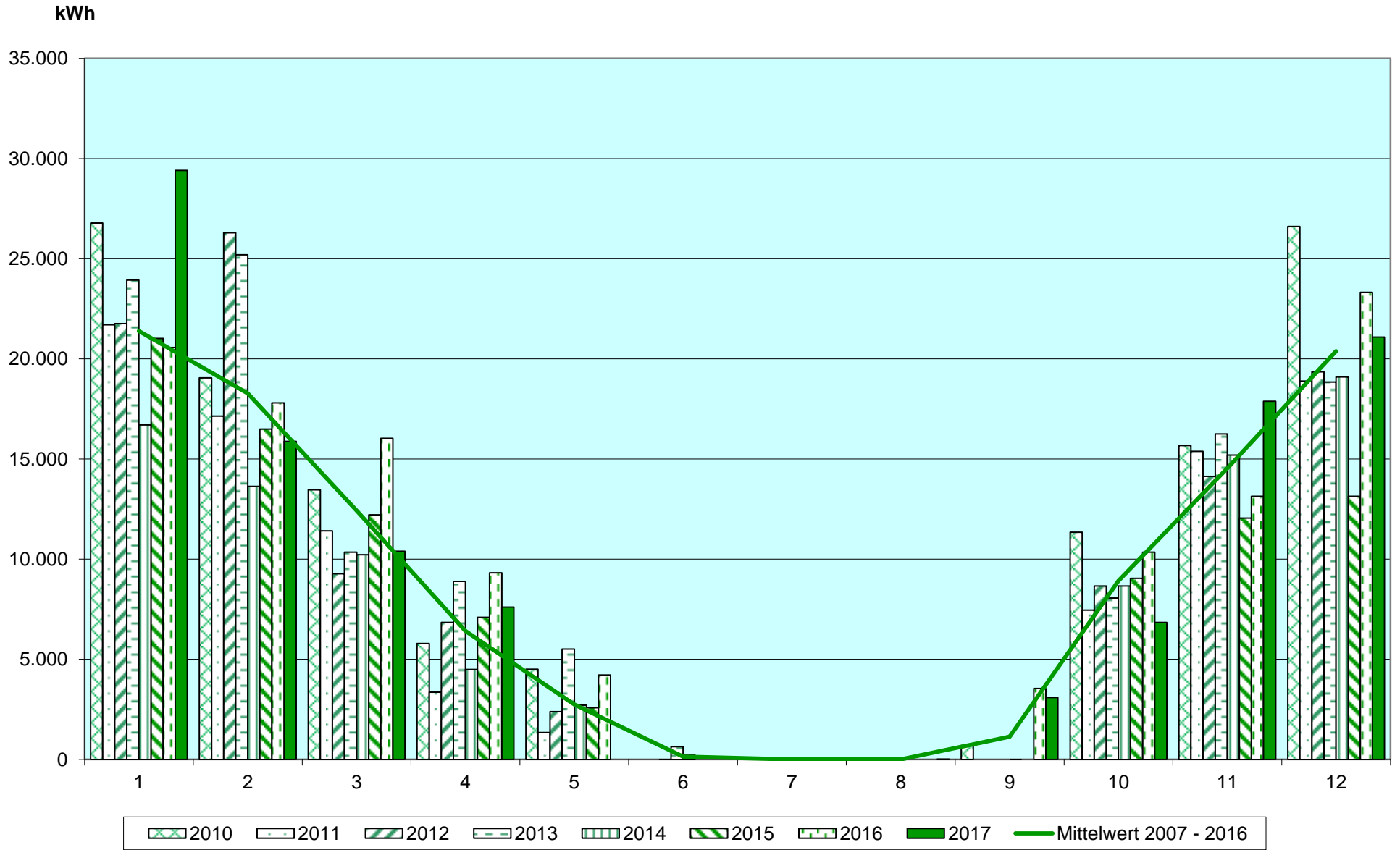
Gesamt m³	1. Halbjahr m³	2. Halbjahr m³	Summe m³
0	0	0	0
0	0	0	0
0	0	0	0
293	146	147	293
258	136	123	258
297	139	158	297
337	145	192	337
275	130	145	275
361	183	179	361
276	144	132	276
301	148	153	301
289	148	142	289
203	120	83	203
327	179	148	327
279	87	192	279

300	146	154	300
299	146	152	299
300	146	153	300
303	150	154	303

Gebäude 106 Strom

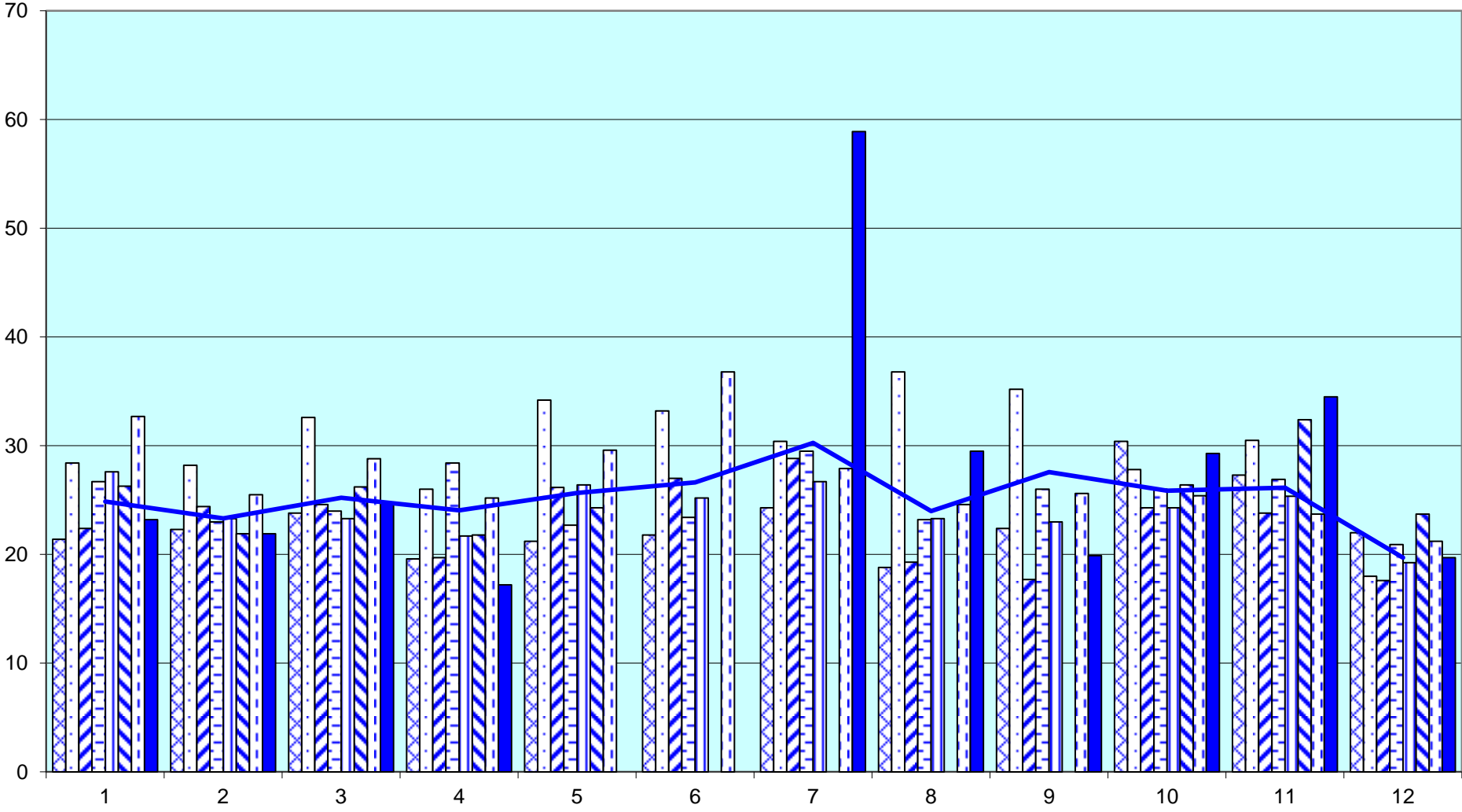


Wärme Gebäude 106



Trinkwasserverbrauch Gebäude 106

m³



2010 2011 2012 2013 2014 2015 2016 2017 Mittelwert 2007 - 2016