

Verbrauchsdaten

Rektorat

Strom

	Jan	Feb	Mrz	Apr	Mai	Jun	Jul	Aug	Sep	Okt	Nov	Dez
	kWh	kWh	kWh	kWh	kWh	kWh	kWh	kWh	kWh	kWh	kWh	kWh
2003	33.500	29.300	29.100	27.700	29.698	28.611	30.491	28.047	28.088	31.243	30.587	31.734
2004	32.187	29.481	31.344	27.758	27.832	28.177	29.527	28.900	28.154	31.721	33.017	34.656
2005	32.271	29.430	30.759	30.748	30.652	30.838	29.802	29.644	30.141	31.653	35.245	35.245
2006	34.231	32.603	34.753	30.859	34.997	33.460	36.354	33.085	32.544	34.450	34.461	34.256
2007	36.385	32.776	34.652	31.839	34.081	34.195	37.589	34.683	33.705	37.800	38.849	35.829
2008	37.021	33.527	32.750	35.191	33.325	35.062	36.544	33.722	33.778	39.632	37.935	36.618
2009	38.032	35.643	36.753	33.640	34.956	33.541	37.840	34.845	33.792	36.935	37.184	39.152
2010	39.383	34.960	36.773	32.671	33.434	34.770	37.078	35.824	33.407	36.403	36.685	37.887
2011	37.864	37.171	38.993	36.528	40.945	39.158	41.886	40.128	39.218	40.092	42.602	44.088
2012	44.000	39.810	40.030	36.241	36.855	37.381	41.640	37.443	34.437	37.925	39.130	37.255
2013	41.928	36.220	37.234	35.335	34.807	36.553	41.302	35.610	33.622	38.021	37.399	35.877
2014	37.745	34.526	33.201	31.463	34.033	34.109	40.780	36.473	35.467	37.834	38.145	36.413
2015	35.253	31.060	33.687	31.526	31.778	33.440	38.584	33.506	31.556	34.000	34.447	33.583
2016	33.796	32.786	31.290	31.392	31.605	33.504	35.297	31.992	31.011	32.596	33.694	32.128
2017	32.810	29.379	31.156	29.015	33.836	33.631	36.313	33.458	28.951	31.918	33.090	

Gesamt	1. Halbjahr	2. Halbjahr	Summe
kWh	kWh	kWh	kWh
358.099	177.909	180.190	358.099
362.754	176.779	185.975	362.754
376.428	184.698	191.730	376.428
406.053	200.903	205.150	406.053
422.383	203.928	218.455	422.383
425.105	206.876	218.229	425.105
432.313	212.565	219.748	432.313
429.275	211.991	217.284	429.275
478.673	230.659	248.014	478.673
462.147	234.317	227.830	462.147
443.908	222.077	221.831	443.908
430.189	205.077	225.112	430.189
402.420	196.744	205.676	402.420
391.091	194.373	196.718	391.091
353.557	189.827	163.730	353.557

Mittelwert 2004 - 2013	37.330	34.162	35.404	33.081	34.188	34.314	36.956	34.388	33.280	36.463	37.251	37.086
Mittelwert 2005 - 2014	37.886	34.667	35.590	33.452	34.809	34.907	38.082	35.146	34.011	37.075	37.764	37.262
Mittelwert 2006 - 2015	38.184	34.830	35.883	33.529	34.921	35.167	38.960	35.532	34.153	37.309	37.684	37.096
Mittelwert 2007 - 2016	38.141	34.848	35.536	33.583	34.582	35.171	38.854	35.423	33.999	37.124	37.607	36.883

423.904	208.479	215.425	423.904
430.647	211.309	219.338	430.647
433.247	212.514	220.733	433.247
431.750	211.861	219.890	431.750

Quelle: Rechnung

Fernwärme

	Jan	Feb	Mrz	Apr	Mai	Jun	Jul	Aug	Sep	Okt	Nov	Dez
	to	to	to	to	to	to	to	to	to	to	to	to
2003	210,1	190,5	77,7	54,3	17,1	0,0	0,0	0,0	2,4	79,2	93,6	124,6
2004	216,7	121,1	152,2	50,4	26,6	1,1	0,0	0,0	11,4	49,0	123,4	171,5
2005	146,8	173,4	139,1	56,9	24,0	2,1	0,0	0,0	11,4	49,0	123,4	171,5
2006	233,7	153,9	176,4	60,1	24,0	4,7	0,0	0,0	0,0	20,2	90,4	149,9
2006 GTZ	192,9	150,8	144,2	55,8	34,3	1,5	0,0	0,0	0,0	45,1	111,2	165,8
2007	122,8	118,7	97,4	34,0	0,0	0,0	0,0	0,0	15,6	55,0	138,0	171,7
2007 GTZ	152,6	155,1	87,5	48,9	0,0	0,0	0,0	0,0	5,2	44,2	115,3	161,6
2008	165,3	118,0	122,0	80,0	15,0	1,0	0,0	0,0	23,0	52,0	114,0	243,0
2008 GTZ	182,6	131,8	105,6	55,6	29,5	0,3	0,0	0,0	7,0	42,9	105,6	230,8
2009	159,0	187,0	115,0	31,0	15,0	1,0	2,0	1,0	2,0	68,0	84,0	187,0
2009 GTZ	124,3	183,0	96,4	31,3	28,7	0,4	3,2	0,6	1,5	53,7	102,2	192,3
2010	195,0	152,0	111,0	61,0	46,0	8,0	1,0	1,0	7,0	72,0	120,0	187,0
2010 GTZ	159,3	157,8	95,9	52,0	24,9	2,7	1,8	0,1	2,4	49,9	119,9	159,0
2011	202,0	141,0	98,0	23,0	14,0	1,0	0,0	0,0	0,0	58,0	120,0	143,0
2011 GTZ	202,6	157,3	95,8	26,8	19,6	0,5	0,0	0,0	0,0	50,1	110,5	176,2
2012	154,4	209,0	78,0	74,0	18,0	10,0	5,0	4,0	15,0	83,0	112,0	149,0
2012 GTZ	163,9	166,2	82,3	57,5	22,0	7,3	8,2	1,5	5,8	71,7	103,1	183,8
2013	158,0	221,0	130,0	59,0	49,0	8,0	5,0	6,0	27,0	46,0	113,0	169,0
2013 GTZ	152,1	199,9	94,5	50,9	25,0	2,0	5,0	6,0	14,8	54,6	103,2	173,2
2014	156,0	129,0	60,0	28,0	35,0	3,0	2,0	1,0	1,0	33,0	114,0	176,0
2014 GTZ	177,73	165,81	59,80	26,29	27,42	7,81	1,58	0,11	0,70	46,24	122,03	200,50
2015	141,0	157,0	101,0	43,0	19,0	3,0	1,0	1,0	21,0	87,0	109,0	
2015 GTZ	146,82	153,10	92,09	35,54	22,06	2,47	1,00	1,00	8,97	67,64	133,41	0,00
2016	141,0	142,0	131,0	60,0	36,0	8,0	1,0	0,0	17,0	67,0	177,0	150,0
2016 GTZ	0,00	0,00	0,00	0,00	0,00	0,00	0,00	0,00	0,00	0,00	0,00	0,00
2017	231,0	139,0	75,0	47,0	21,0	0,0	0,0	0,0	28,0	76,0	142,0	

Gesamt	1. Halbjahr	2. Halbjahr	Summe
to	to	to	to
850	550	300	850
923	568	355	923
898	542	355	898
913	653	261	913
901			
753	373	380	753
771			
933	501	432	933
892			
852	508	344	852
818	464	354	818
961	573	388	961
826	493	333	826
800	479	321	800
839	503	337	839
911	543	368	911
873	499	374	873
991	625	366	991
881	524	357	881
738	411	327	738
836	465	371	836
683	464	219	683
664	452	212	664
930	518	412	930
0	0	0	0
759	513	246	759

Mittelwert 2004 - 2013	175	160	122	53	23	4	1	1	11	55	114	174
Mittelwert 2005 - 2014	169	160	113	51	24	4	2	1	10	54	113	175
Mittelwert 2006 - 2015	169	159	109	49	24	4	2	1	11	57	111	175
Mittelwert 2007 - 2016	159	157	104	49	25	4	2	1	13	62	120	175

894	537	357	894
875	521	354	875
871	513	358	871
873	500	373	873

Wasser

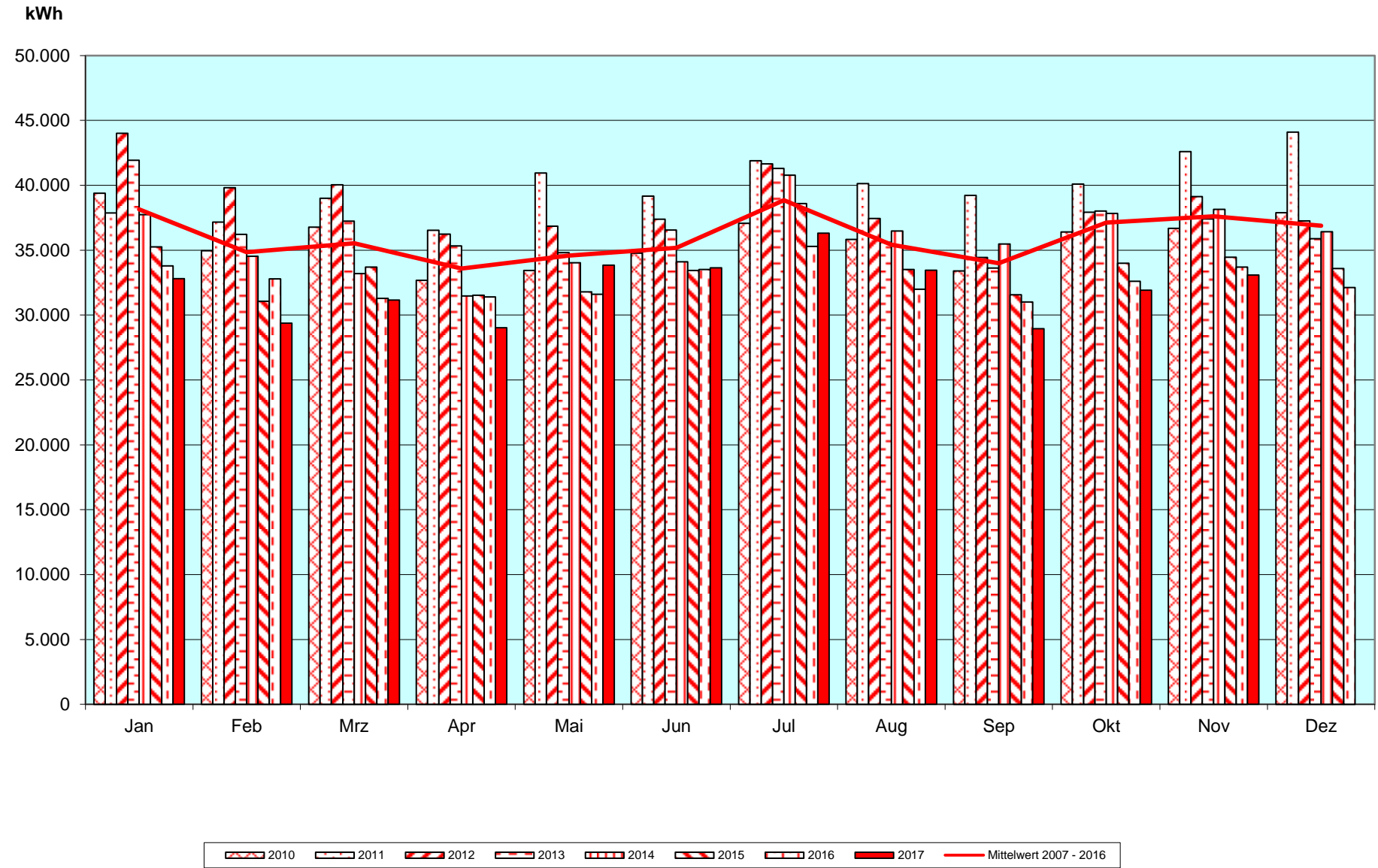
	Jan	Feb	Mrz	Apr	Mai	Jun	Jul	Aug	Sep	Okt	Nov	Dez
	m³	m³	m³	m³	m³	m³	m³	m³	m³	m³	m³	m³
2003		641			405			477			405	
2004		394			378			403			368	
2005		381			433			405			406	
2006		391			364			411			445	
2007		418			489			455			506	
2008		505			510			535			493	
2009		385			410			422			453	
2010		386			384			374			444	
2011		525			442			434			414	
2012		413			410			399			404	
Verbrauch 2013		434			386			417			396	
2014		431			475			440			530	
2015		402			401			296			417	
2016		476			576			657			448	
2017		502			549			461			445	

Gesamt	1. Halbjahr	2. Halbjahr	Summe
m³	m³	m³	m³
1.928	1.046	882	1.928
1.543	772	771	1.543
1.625	814	811	1.625
1.611	755	856	1.611
1.868	907	961	1.868
2.043	1.015	1.028	2.043
1.670	795	875	1.670
1.588	770	818	1.588
1.815	967	848	1.815
1.626	823	803	1.626
1.633	820	813	1.633
1.876	906	970	1.876
1.516	803	713	1.516
2.157	1.052	1.105	2.157
1.957	1.051	906	1.957

Mittelwert 2004 - 2013	423		421		426		433	
Mittelwert 2005 - 2014	427		430		429		449	
Mittelwert 2006 - 2015	429		427		418		450	
Mittelwert 2007 - 2016	438		448		443		451	
1. Quartal			2. Quartal		3. Quartal		4. Quartal	

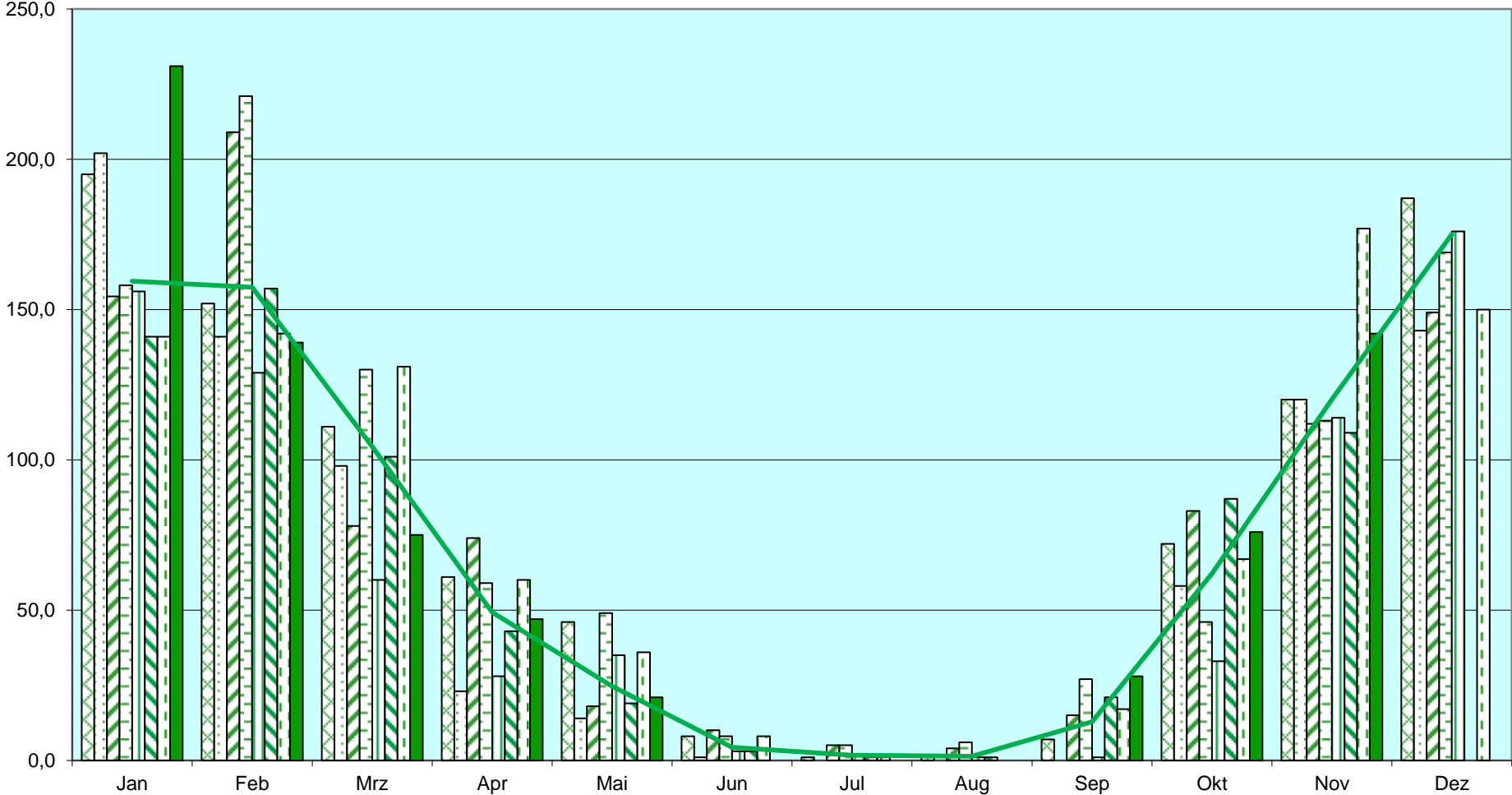
1.702	844	858	1.702
-------	-----	-----	-------

Stromverbrauch Rektorat

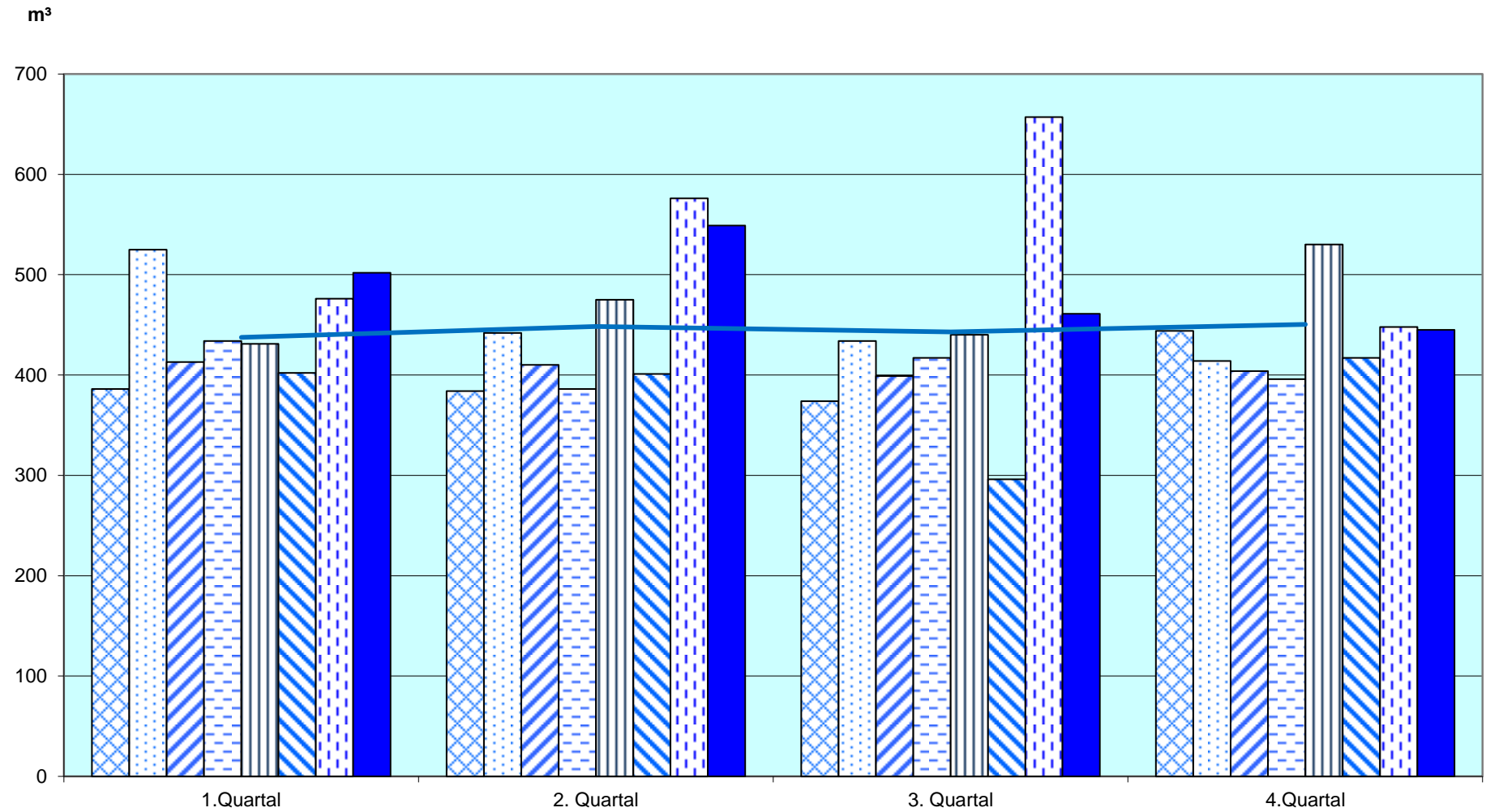


Dampfverbrauch Rektorat

to



Wasserverbrauch Rektorat



2010 2011 2012 2013 2014 2015 2016 2017 Mittelwert 2007 - 2016