

Verbrauchsdaten

TEC 4

Gebäude 104

Strom	Jan	Feb	Mrz	Apr	Mai	Jun	Jul	Aug	Sep	Okt	Nov	Dez
	kWh	kWh	kWh	kWh	kWh	kWh	kWh	kWh	kWh	kWh	kWh	kWh
2003												
2004												
2005												
2006	194.534	186.599	201.104	189.953	196.285	207.591	228.601	206.755	201.210	200.516	194.679	194.477
2007	195.071	186.401	202.599	193.109	202.601	205.898	215.045	200.410	188.762	207.099	203.293	199.697
2008	200.814	199.180	209.508	199.194	209.942	220.306	242.549	224.768	210.210	212.138	213.691	218.543
2009	218.473	200.619	219.157	203.473	217.049	207.635	245.853	245.122	209.968	221.649	212.413	207.916
2010	214.414	202.692	225.336	220.749	221.871	229.641	254.709	237.608	226.422	227.975	226.724	218.029
2011	219.440	209.448	227.923	223.327	236.093	229.510	237.173	254.726	235.736	223.805	225.300	218.772
2012	230.457	221.221	229.033	227.714	232.497	237.419	255.203	267.811	225.908	233.412	232.146	219.412
2013	233.697	231.086	310.676	236.598	236.759	259.220	277.888	263.898	243.063	237.871	245.229	226.679
2014	232.594	218.430	244.194	232.770	248.098	264.532	289.488	238.198	170.176	176.704	158.199	223.046
2015	226.502	228.959	265.106	263.462	201.000	209.204	233.152	228.509	194.822	183.572	183.189	182.957
2016	186.927	178.064	187.673	185.586	191.221	201.174	221.031	214.809	195.816	190.199	182.957	193.049
2017	206.062	191.664	209.329	188.675	201.270	213.640	215.701	225.603	195.920	190.015	195.195	195.433

Gesamt	1. Halbjahr	2. Halbjahr	Summe
kWh	kWh	kWh	kWh
0	0	0	0
0	0	0	0
0	0	0	0
2.402.304	1.176.066	1.226.238	2.402.304
2.399.985	1.185.679	1.214.306	2.399.985
2.560.843	1.238.944	1.321.899	2.560.843
2.609.327	1.266.406	1.342.921	2.609.327
2.706.170	1.314.703	1.391.467	2.706.170
2.741.253	1.345.741	1.395.512	2.741.253
2.812.232	1.378.340	1.433.892	2.812.232
3.002.664	1.508.036	1.494.628	3.002.664
2.696.428	1.440.618	1.255.810	2.696.428
2.600.434	1.394.233	1.206.201	2.600.434
2.328.506	1.130.645	1.197.861	2.328.506
2.428.507	1.210.640	1.217.867	2.428.507

Mittelwert 2004 - 2013	213.363	204.656	228.167	211.765	219.137	224.652	244.628	237.637	217.660	220.558	219.184	212.941
Mittelwert 2005 - 2014	215.499	206.186	229.948	214.099	222.355	229.084	249.612	237.700	212.384	215.685	212.408	214.063
Mittelwert 2006 - 2015	216.600	208.464	233.464	219.035	220.219	227.096	247.966	236.781	210.628	212.474	209.486	210.953
Mittelwert 2007 - 2016	215.839	207.610	232.121	218.598	219.713	226.454	247.209	237.586	210.088	211.442	208.314	210.810

2.654.347	1.301.739	1.352.608	2.654.347
2.659.023	1.317.170	1.341.853	2.659.023
2.653.164	1.324.877	1.328.287	2.653.164
2.645.784	1.320.335	1.325.450	2.645.784

Wärme ohne Kälteerzeugung	Jan	Feb	Mrz	Apr	Mai	Jun	Jul	Aug	Sep	Okt	Nov	Dez
	kWh	kWh	kWh	kWh	kWh	kWh	kWh	kWh	kWh	kWh	kWh	kWh
2003												
2004												
2005												
2006	329.090	254.580	216.500	108.210	44.810	29.830	10.000	21.110	17.200	47.150	121.570	197.290
2007	180.710	159.230	163.440	69.980	36.290	18.890	19.970	18.700	48.180	107.390	211.020	263.160
2008	208.420	196.830	193.030	126.300	41.180	27.390	21.900	21.750	60.970	98.950	175.160	270.340
2009	351.130	253.940	200.020	71.910	38.110	26.800	20.710	18.790	34.950	114.190	125.800	245.260
2010	336.880	245.810	207.670	111.060	79.710	31.470	21.300	26.590	51.380	128.240	170.420	320.540
2011	264.480	218.830	172.000	74.640	46.440	26.020	26.710	24.610	30.700	103.480	179.680	191.910
2012	219.970	322.290	144.390	119.380	52.363	28.077	22.900	41.019	54.700	119.500	178.410	250.160
2013	311.600	322.080	337.500	144.560	93.530	44.570	26.430	28.190	46.650	89.940	216.000	253.570
2014	228.810	196.000	168.770	95.400	70.180	32.960	32.420	33.980	45.210	75.140	146.190	261.545
2015	280.500	301.500	206.850	123.400	60.850	35.930	26.190	28.740	56.880	115.620	137.860	134.150
2016	223.070,0	183.380,0	190.490,0	112.690,0	58.450,0	33.640,0	27.510,0	26.980,0	36.430,0	127.000,0	134.150,0	302.880,0
2017	392.700,0	205.050,0	146.990,0	121.620,0	51.740,0	27.870,0	25.000,0	33.640,0	61.940,0	82.540,0	174.340,0	217.790,0

Gesamt	1. Halbjahr	2. Halbjahr	Summe
kWh	kWh	kWh	kWh
0	0	0	0
0	0	0	0
0	0	0	0
1.397.340	983.020	414.320	1.397.340
1.296.960	628.540	668.420	1.296.960
1.442.220	793.150	649.070	1.442.220
1.501.610	941.910	559.700	1.501.610
1.731.070	1.012.600	718.470	1.731.070
1.359.500	802.410	557.090	1.359.500
1.553.159	886.470	666.689	1.553.159
1.914.620	1.253.840	660.780	1.914.620
1.386.245	791.760	594.485	1.386.245
1.508.470	1.009.030	499.440	1.508.470
1.456.670	801.720	654.950	1.456.670
1.541.220	945.970	595.250	1.541.220

Mittelwert 2004 - 2013	275.285	246.699	204.319	103.255	54.054	29.131	21.240	25.095	43.091	101.105	172.258	249.029
Mittelwert 2005 - 2014	270.121	241.066	200.369	102.342	55.846	29.556	22.482	26.082	43.327	98.220	169.361	250.419
Mittelwert 2006 - 2015	271.159	247.109	201.017	104.448	56.346	30.194	22.853	26.348	44.682	99.960	166.211	238.793
Mittelwert 2007 - 2016	260.557	239.989	198.416	104.896	57.710	30.575	24.604	26.935	46.605	107.945	167.469	249.352

1.524.560	912.743	611.817	1.524.560
1.509.192	899.300	609.892	1.509.192
1.509.119	910.273	598.846	1.509.119
1.515.052	892.143	622.909	1.515.052

Wasser mit Kälteerzeugung	Jan	Feb	Mrz	Apr	Mai	Jun	Jul	Aug	Sep	Okt	Nov	Dez
	m³	m³	m³	m³	m³	m³	m³	m³	m³	m³	m³	m³
2003												
2004												
2005												
2006	2.064	1.828	1.846	1.398	1.484	1.940	2.535	1.472	1.619	1.334	1.408	1.433
2007	1.424	1.397	1.551	1.549	1.517	1.685	1.810	1.566	1.270	1.478	1.821	1.790
2008	1.604	1.558	1.656	1.404	1.616	1.921	2.421	1.945	1.614	1.520	1.610	1.803
2009	1.783	1.683	1.805	1.507	1.735	1.791	2.290	2.481	1.892	1.679	1.592	1.720
2010	1.919	1.612	1.733	1.784	1.653	2.100	2.875	2.132	1.595	1.714	1.601	1.768
2011	1.702	1.641	1.809	1.723	2.303	2.059	2.015	2.581	1.924	1.641	1.585	1.614
2012	1.783	1.950	1.872	1.775	2.153	2.233	2.436	2.654	2.056	2.108	2.222	2.214
2013	2.456	2.287	2.746	2.157	1.930	2.519	3.214	2.886	2.214	1.782	1.738	1.699
2014	1.712	1.678	1.882	1.749	1.860	2.204	2.632	2.315	2.156	1.821	1.647	1.957
2015	2.582	1.692	1.689	1.571	1.396	1.467	2.053	1.968	1.470	1.592	1.580	1.447
2016	1.723	1.590	1.782	1.449	1.516	1.719	1.967	2.350	1.830	1.676	1.447	1.546
2017	1.720	1.500	1.565	1.467	1.437	2.181	2.337	1.778	1.111	1.207	1.360	1.453

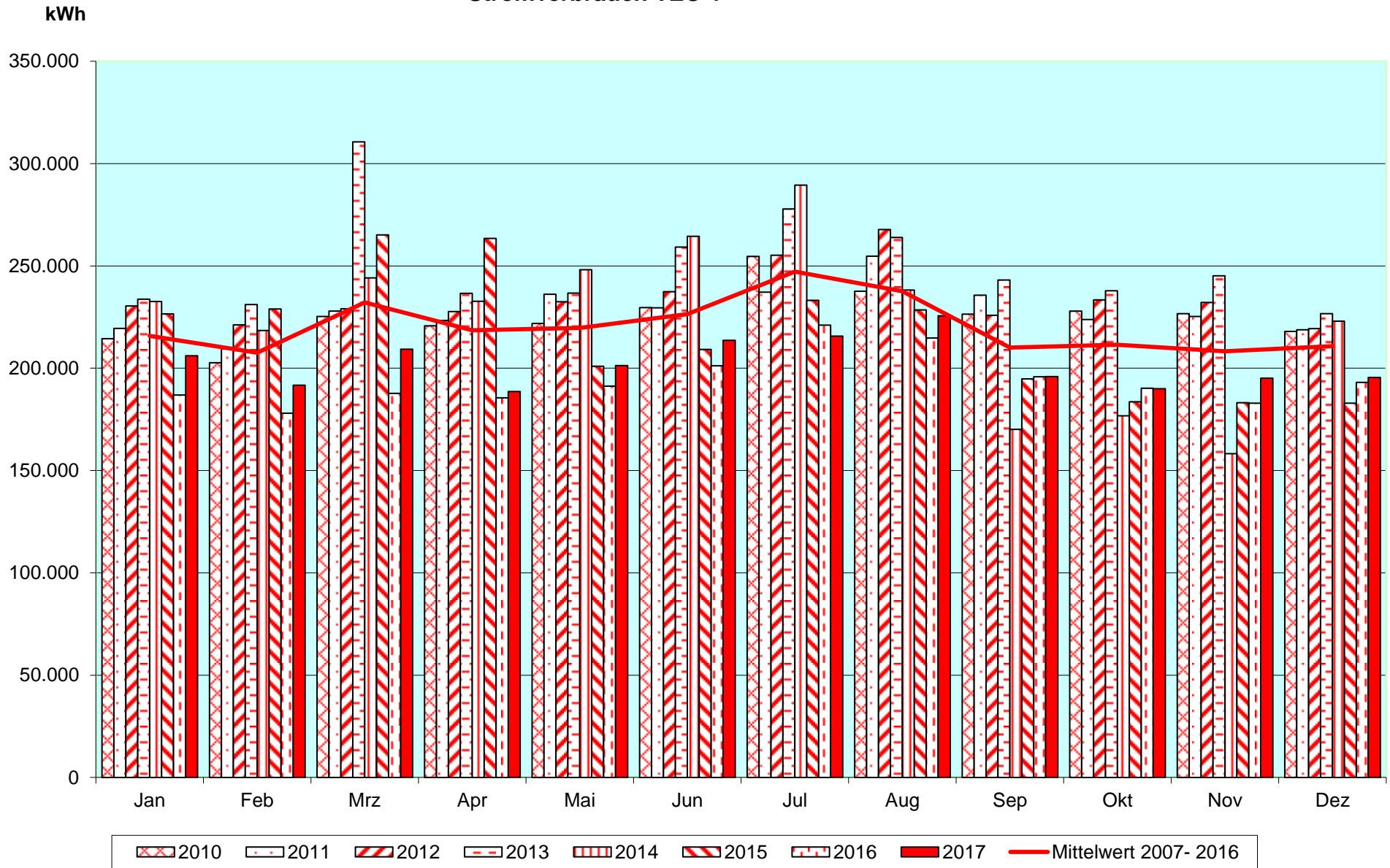
Gesamt	1. Halbjahr	2. Halbjahr	Summe
m³	m³	m³	m³
0	0	0	0
0	0	0	0
0	0	0	0
20.361	10.560	9.801	20.361
18.858	9.123	9.735	18.858
20.672	9.759	10.913	20.672
21.958	10.304	11.654	21.958
22.486	10.801	11.685	22.486
22.597	11.237	11.360	22.597
25.456	11.766	13.690	25.456
27.628	14.095	13.533	27.628
23.613	11.085	12.528	23.613
20.507	10.397	10.110	20.507
20.595	9.779	10.816	20.595
19.116	9.870	9.246	19.116

Mittelwert 2004 - 2013	1.842	1.745	1.877	1.662	1.799	2.031	2.450	2.215	1.773	1.657	1.697	1.755
Mittelwert 2005 - 2014	1.827	1.737	1.878	1.672	1.806	2.050	2.470	2.226	1.816	1.675	1.692	1.778
Mittelwert 2006 - 2015	1.903	1.733	1.859	1.662	1.765	1.992	2.428	2.200	1.781	1.667	1.680	1.744
Mittelwert 2007 - 2016	1.869	1.709	1.853	1.667	1.768	1.970	2.371	2.288	1.802	1.701	1.684	1.756

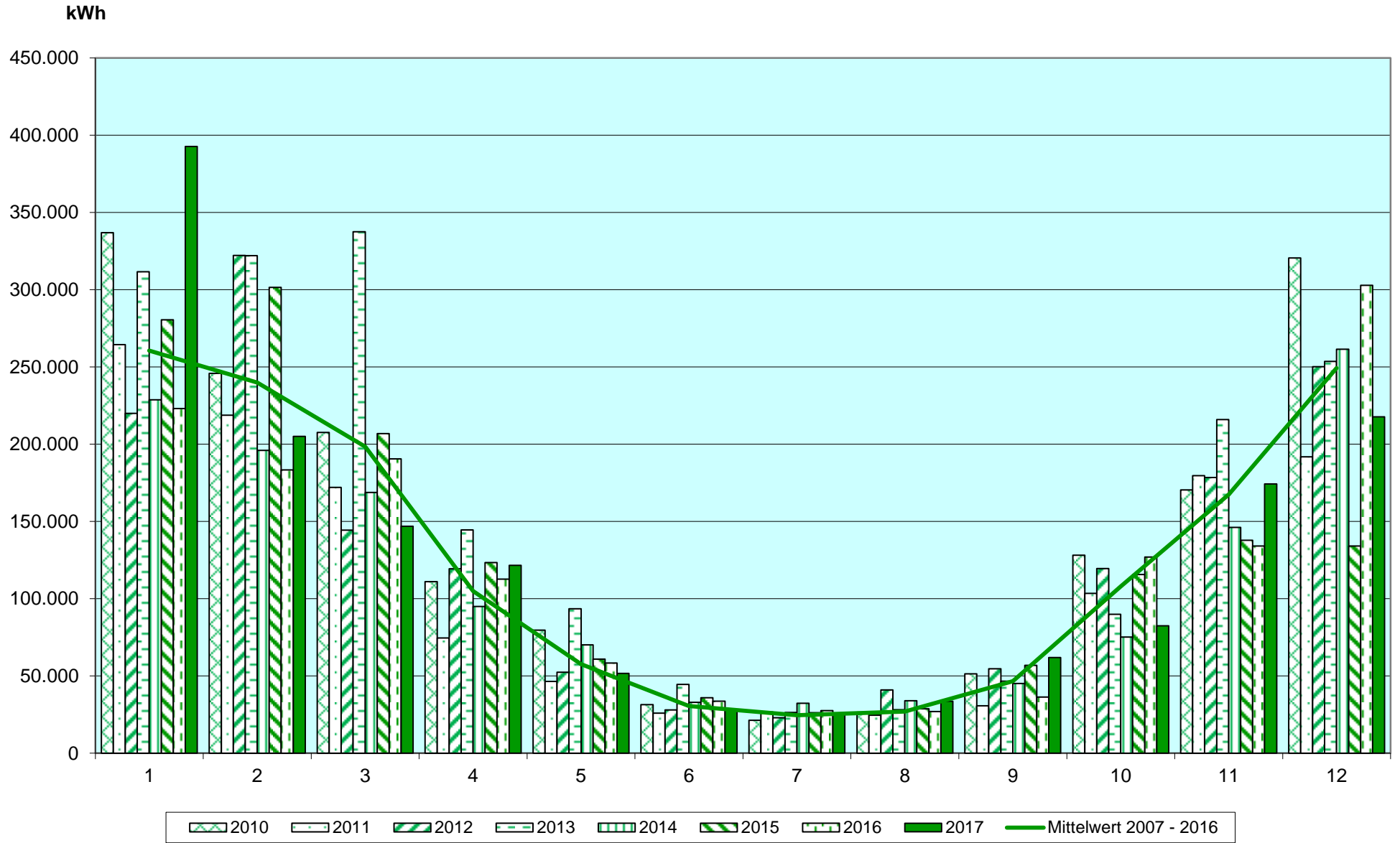
22.502	10.956	11.546	22.502
22.625	10.970	11.655	22.625
22.414	10.913	11.501	22.414
22.437	10.835	11.602	22.437

100%
100%
107

Stromverbrauch TEC 4

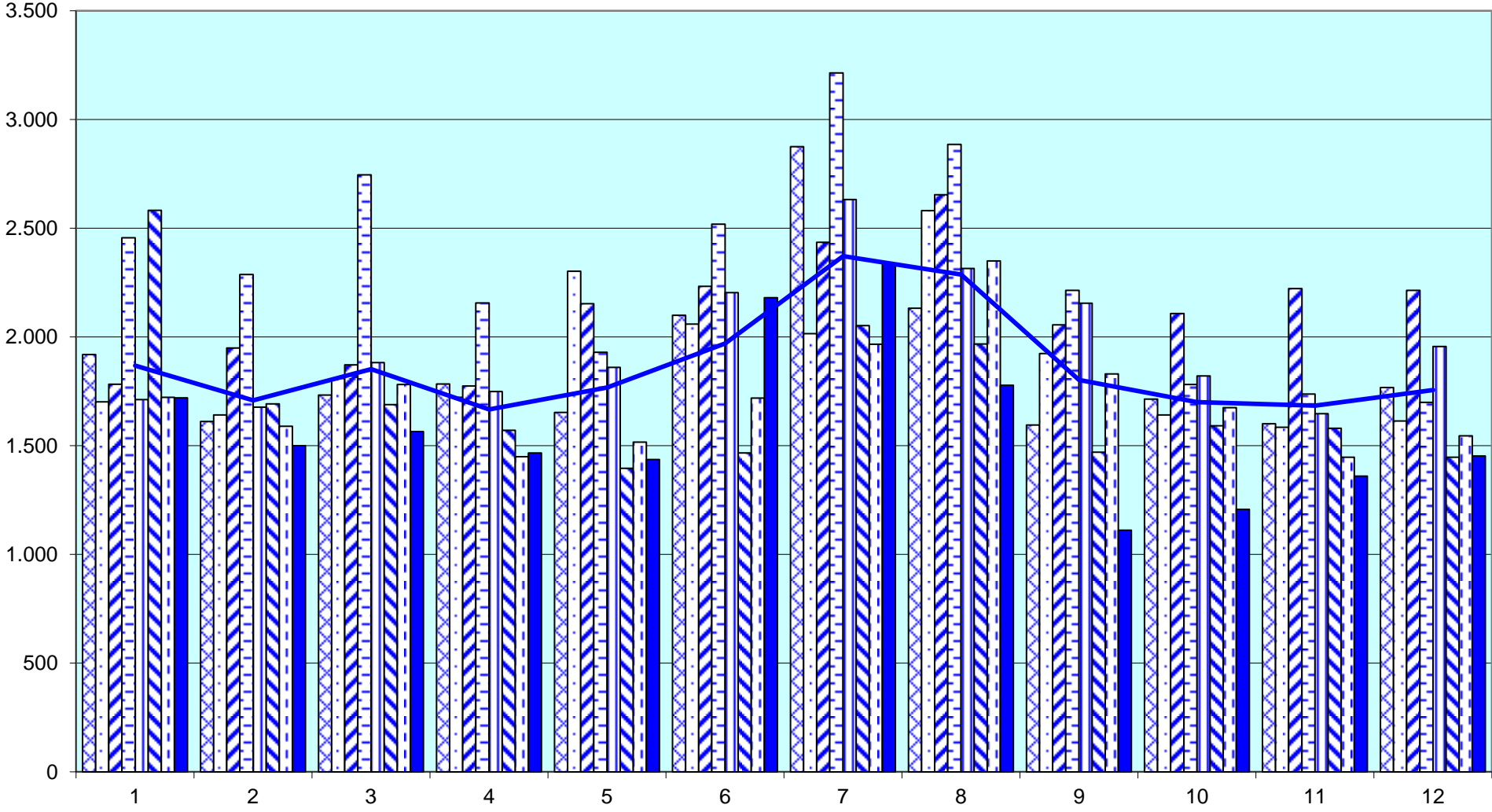


Wärme TEC 4



Trinkwasserverbrauch TEC 4

m³



2010
 2011
 2012
 2013
 2014
 2015
 2016
 2017
 Mittelwert 2007 - 2016