

Verbrauchsdaten

Werthmannstraße 4

Strom	Jan	Feb	Mrz	Apr	Mai	Jun	Jul	Aug	Sep	Okt	Nov	Dez
	kWh	kWh	kWh	kWh	kWh	kWh	kWh	kWh	kWh	kWh	kWh	kWh
2003	6.910	6.910	6.910	5.711	5.711	5.711	7.948	7.948	7.948	5.865	5.865	5.865
2004	6.320	6.320	6.320	6.320	6.320	6.320	6.509	6.509	6.509	7.267	7.267	7.267
2005	7.235	7.235	7.235	6.691	6.691	6.691	5.891	5.891	5.891	7.665	7.665	7.665
2006	7.523	7.523	7.523	6.003	6.003	6.003	5.932	5.932	5.932	7.370	7.370	7.370
2007	7.469	7.469	7.469	6.625	6.625	6.625	6.581	6.581	6.581	7.269	7.269	7.269
2008	6.948	6.948	6.948	6.335	6.335	6.335	5.773	5.773	5.773	7.967	7.967	7.967
2009	6.741	6.741	6.741	5.733	5.733	5.733	6.480	6.480	6.480	6.497	7.269	7.323
2010	6.960	7.005	6.624	6.074	6.559	5.876	6.082	5.987	6.057	6.268	7.925	6.785
2011	6.422	7.098	6.610	5.177	5.424	5.298	6.411	5.062	4.055	4.803	5.457	4.858
2012	5.282	5.025	4.263	4.881	4.932	4.926	4.938	3.929	5.045	5.491	5.454	6.501
2013	5.230	5.640	4.529	5.129	4.666	4.310	5.409	4.482	4.957	5.000	5.944	6.188
2014	4.969	5.441	5.414	4.119	4.974	3.610	5.282	3.737	5.048	4.326	4.610	4.108
2015	7.564	5.632	4.161	2.968	2.410	2.189	1.985	1.606	1.266	1.461	1.879	1.225
2016	1.626	1.626	1.155	725	175	286	265	194	279	433	511	316
<b>Mittelwert 2004 - 2013</b>	6.613	6.770	6.426	5.897	5.929	5.812	5.998	5.489	5.622	6.540	6.959	6.919
<b>Mittelwert 2005 - 2014</b>	6.478	6.683	6.336	5.677	5.794	5.541	5.876	5.211	5.475	6.246	6.693	6.603
<b>Mittelwert 2006 - 2015</b>	6.511	6.522	6.028	5.304	5.366	5.090	5.485	4.783	5.013	5.625	6.114	5.959

Gesamt	1. Halbjahr	2. Halbjahr	Summe
kWh	kWh	kWh	kWh
79.302	37.865	41.437	79.302
79.248	37.920	41.328	79.248
82.442	41.776	40.666	82.442
80.485	40.578	39.907	80.485
83.833	42.283	41.550	83.833
81.068	39.849	41.219	81.068
75.148	37.421	37.727	75.148
78.182	39.098	39.084	78.182
67.175	36.729	30.446	67.175
60.667	29.309	31.358	60.667
61.484	29.504	31.980	61.484
55.638	28.527	27.111	55.638
34.346	24.924	9.422	34.346
7.592	5.593	1.998	7.592
<b>74.973</b>	<b>37.447</b>	<b>37.527</b>	<b>74.973</b>
<b>72.612</b>	<b>36.507</b>	<b>36.105</b>	<b>72.612</b>
<b>67.803</b>	<b>34.822</b>	<b>32.980</b>	<b>67.803</b>

Quelle: Rechnung

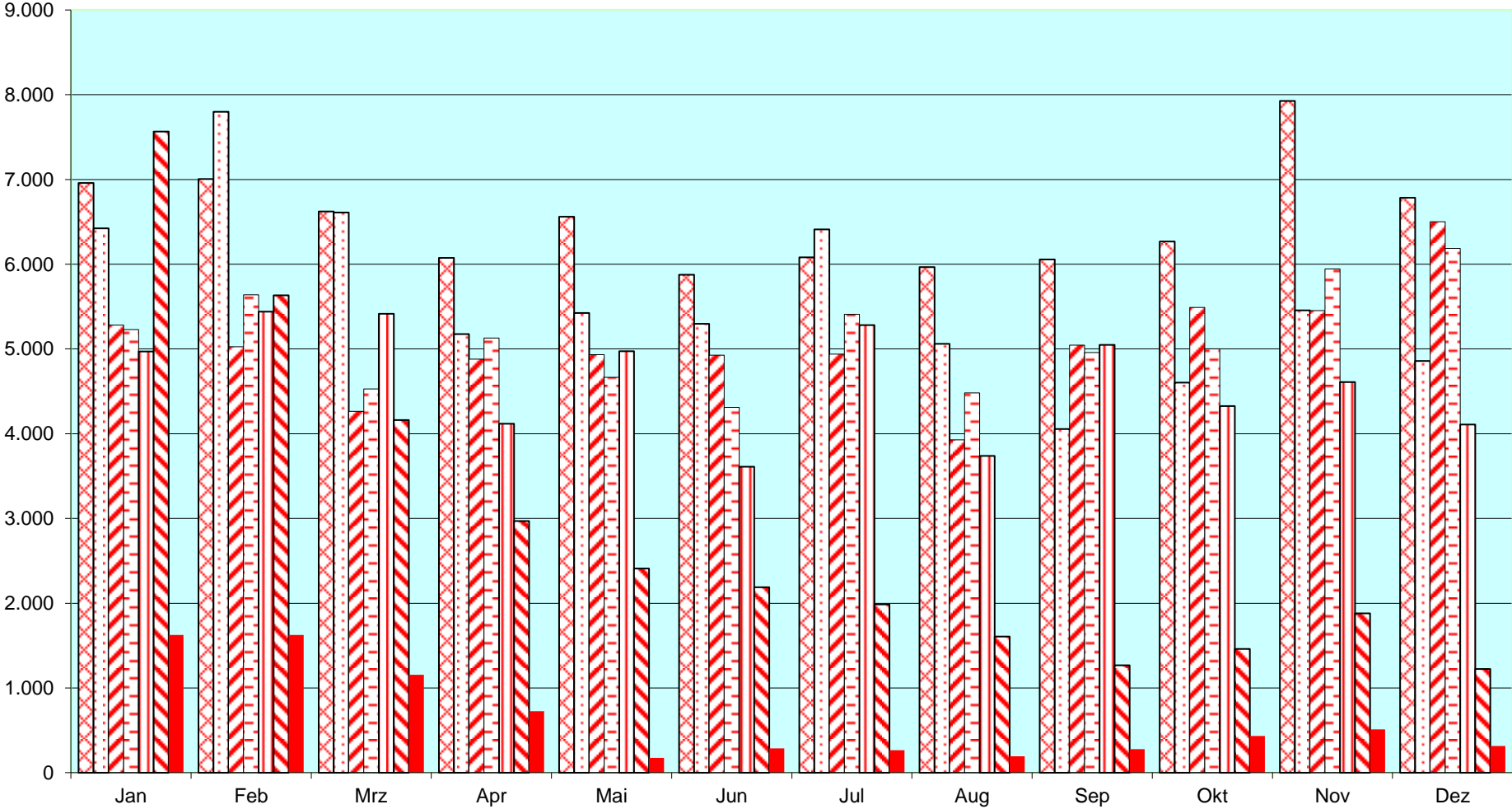
Wärme	Jan	Feb	Mrz	Apr	Mai	Jun	Jul	Aug	Sep	Okt	Nov	Dez
	MWh	MWh	MWh	MWh	MWh	MWh	MWh	MWh	MWh	MWh	MWh	MWh
2003	36.06	31.82	27.57	16.97	8.48	2.83	2.83	2.83	6.36	16.97	25.45	33.94
2004	33.10	29.21	25.31	15.58	7.79	2.60	2.60	2.60	5.84	15.58	23.36	31.15
2005	30.97	27.33	23.69	14.58	7.29	2.43	2.43	2.43	5.47	14.58	21.86	29.15
2006	30.18	26.63	23.08	14.20	7.10	2.37	2.37	2.37	5.33	14.20	21.30	28.40
2006 GTZ	24.01	26.09	18.87	13.18	10.15	0.74	2.37	0.21	26.46	31.68	26.21	31.41
2007	28.90	25.50	22.10	13.60	6.80	2.27	2.27	2.27	5.10	13.60	20.40	27.20
2007 GTZ	35.92	33.32	19.89	19.89	9.81	1.08	0.92	0.26	4.71	10.84	17.05	25.61
2008	30.12	26.58	23.04	14.18	7.09	2.36	2.36	2.36	5.32	14.18	21.26	28.35
2008 GTZ	33.27	29.69	19.93	9.85	13.93	0.81	4.06	1.51	1.63	11.71	19.69	26.90
2009	25.81	22.78	19.74	12.15	6.07	2.02	2.02	2.02	4.56	12.15	18.22	24.30
2009 GTZ	30.13	22.29	18.35	12.27	11.81	0.75	3.24	1.28	3.37	9.82	22.16	24.99
2010	26.00	21.00	23.00	11.00	7.00	0.00	0.00	0.00	4.00	13.00	19.00	30.00
2010 GTZ	21.24	21.80	19.89	9.38	9.80	0.00	0.00	0.00	1.39	9.01	18.88	25.51
2011	27.00	29.00	17.00	4.00	2.00	0.00	0.00	0.00	0.00	8.00	20.00	20.00
2011 GTZ	27.08	32.35	16.62	4.65	2.81	0.00	0.00	0.00	0.00	6.91	18.42	24.65
2012	29.00	37.00	13.00	12.00	1.00	0.00	0.00	0.00	1.00	7.00	17.00	28.00
2012 GTZ	36.73	39.45	13.71	8.93	1.22	0.00	0.00	0.00	0.99	6.95	15.66	34.51
2013	27.00	30.00	20.00	15.00	5.00	2.00	0.00	0.00	1.00	5.00	17.00	29.00
2013 GTZ	25.99	27.14	14.53	12.94	2.55	0.61	0.00	0.00	0.55	5.94	15.53	29.72
2014	20.00	21.00	17.00	5.00	4.00	1.00	0.00	0.00	0.00	5.00	14.00	27.00
2014 GTZ	22.79	26.99	16.94	4.70	3.13	2.60	0.00	0.00	0.00	7.01	14.99	30.76
2015	28.00	32.00	15.00	5.00	1.00	0.00	0.00	0.00	0.00	5.00	10.00	7.00
2015 GTZ	29.18	31.70	19.69	4.13	1.18	0.00	0.00	0.00	0.00	3.89	12.74	9.77
2016	24.00	14.00	16.00	4.00							3.00	
2016 GTZ	0.00	0.00	0.00	0.00	0.00	0.00	0.00	0.00	0.00	0.00	0.00	0.00
<b>Mittelwert 2004 - 2013</b>	28	28	19	12	6	1	1	1	4	12	20	28
<b>Mittelwert 2005 - 2014</b>	27	27	20	12	5	1	1	1	3	11	19	27
<b>Mittelwert 2006 - 2015</b>	27	27	19	11	5	1	1	1	3	10	18	25

Wasser	Jan	Feb	Mrz	Apr	Mai	Jun	Jul	Aug	Sep	Okt	Nov	Dez
	m³	m³	m³	m³	m³	m³	m³	m³	m³	m³	m³	m³
2003		96			96			85		104		
2004		101			108			87		111		
2005		111			124			84		114		
2006		112			96			89		113		
2007		109			93			77		90		
2008		76			99			75		102		
2009		79			80			69		94		
2010	26	26	26	26	31	32	39	18	26	30	36	30
2010		77			89			83		96		
2011	28	34	24	18	35	25	40	22	17	22	31	28
2011		86			78			79		85		
Verbrauch 2012	27	30	19	20	27	27	28	16	18	20	25	29
2012		76			74			62		74		
Verbrauch 2013	27	28	18	21	23	24	32	18	18	23	57	30
2013		73			68			68		110		
2014	27	32	26	21	36	25	43	23	20	39	36	42
2014		85			82			86		117		
2015	32	55	18	10	11	15	14	3	1	5	7	3
2015		105			36			18		15		
2016	7	4	0	0	1	1	101	1	3	8	2	
2016		11			2			105		10		
<b>Mittelwert 2004 - 2013</b>		90			91			77		99		
<b>Mittelwert 2005 - 2014</b>		88			88			77		99		
<b>Mittelwert 2006 - 2015</b>		90			84			72		91		
		1. Quartal			2. Quartal			3. Quartal		4. Quartal		

Gesamt	1. Halbjahr	2. Halbjahr	Summe
MWh	MWh	MWh	MWh
212.1	124	88	212
194.7	114	81	195
182.2	106	76	182
177.5	104	74	178
172.9			
170.0	99	71	170
174.8			
177.2	103	74	177
173.0			
151.8	89	63	152
149.3	84	65	149
154.0	88	66	154
131.0	76	55	131
127.0	79	48	127
133.5	84	50	133
145.0	92	53	145
141.1	84	57	141
151.0	99	52	151
135.4	84	52	135
114.0	68	46	114
129.9	77	53	130
103.0	81	22	103
106.2	74	32	106
61.0	58	3	61
0.0	0	0	0
<b>160</b>	<b>95</b>	<b>65</b>	<b>160</b>
<b>155</b>	<b>93</b>	<b>62</b>	<b>155</b>
<b>147</b>	<b>90</b>	<b>57</b>	<b>147</b>
<b>Gesamt</b>	<b>1. Halbjahr</b>	<b>2. Halbjahr</b>	<b>Summe</b>
<b>m³</b>	<b>m³</b>	<b>m³</b>	<b>m³</b>
381	192	189	381
407	209	198	407
433	235	198	433
410	208	202	410
369	202	167	369
352	175	177	352
322	159	163	322
345	166	179	345
324	164	160	324
286	150	136	286
319	141	178	319
370	167	203	370
174	141	33	174
128	13	115	128
357	181	176	357
353	177	176	353
337	173	163	337

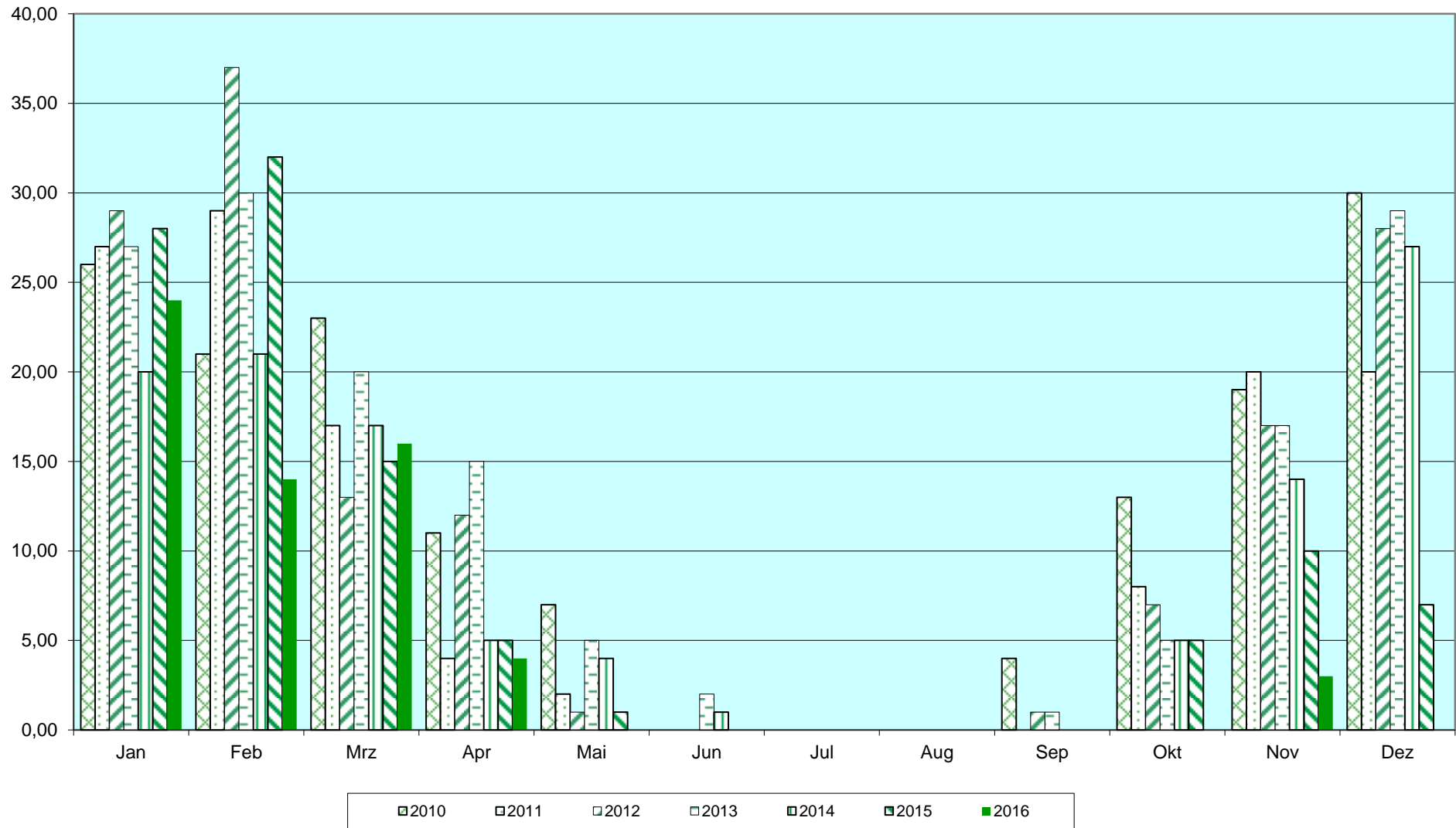
### Stromverbrauch Werthmannstraße 4

kWh



# Wärme Werthmannstraße 4

to



### Trinkwasserverbrauch Werthmannstraße 4

